

AENC-TQST-LAN-DWG-0002

# Norwich to Tilbury

**Volume 2: Plans, Drawings and Sections**

**Document: 2.2 Land Plans - Section F**

**Final Issue C**

**May 2026**

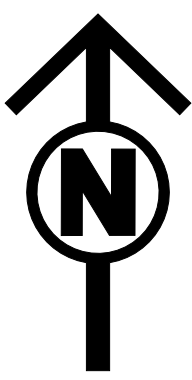
**Planning Inspectorate Reference: EN020027**

Infrastructure Planning (Applications: Prescribed Forms and Procedure)  
Regulations 2009 Regulation 5(2)(i)(i)-(iii)

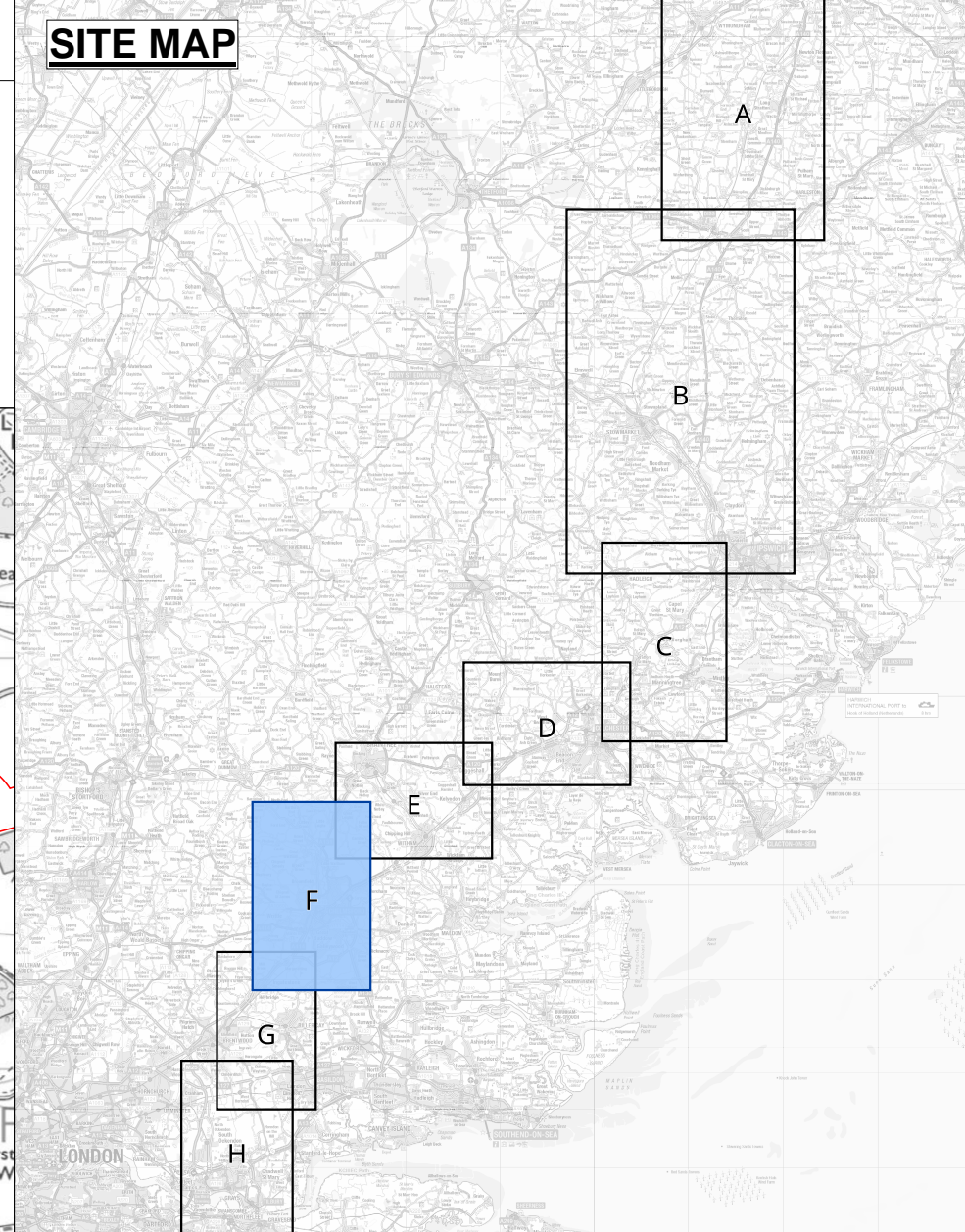
**nationalgrid**

LAND PLANS KEY PLAN  
REGULATION 5(2)(i)-(iii)  
SECTION F (SHEET 1 OF 1,

BRAINTREE DISTRICT COUNCIL, CHELMSFORD CITY COUNCIL AND BRENTWOOD BOROUGH COUNCIL)

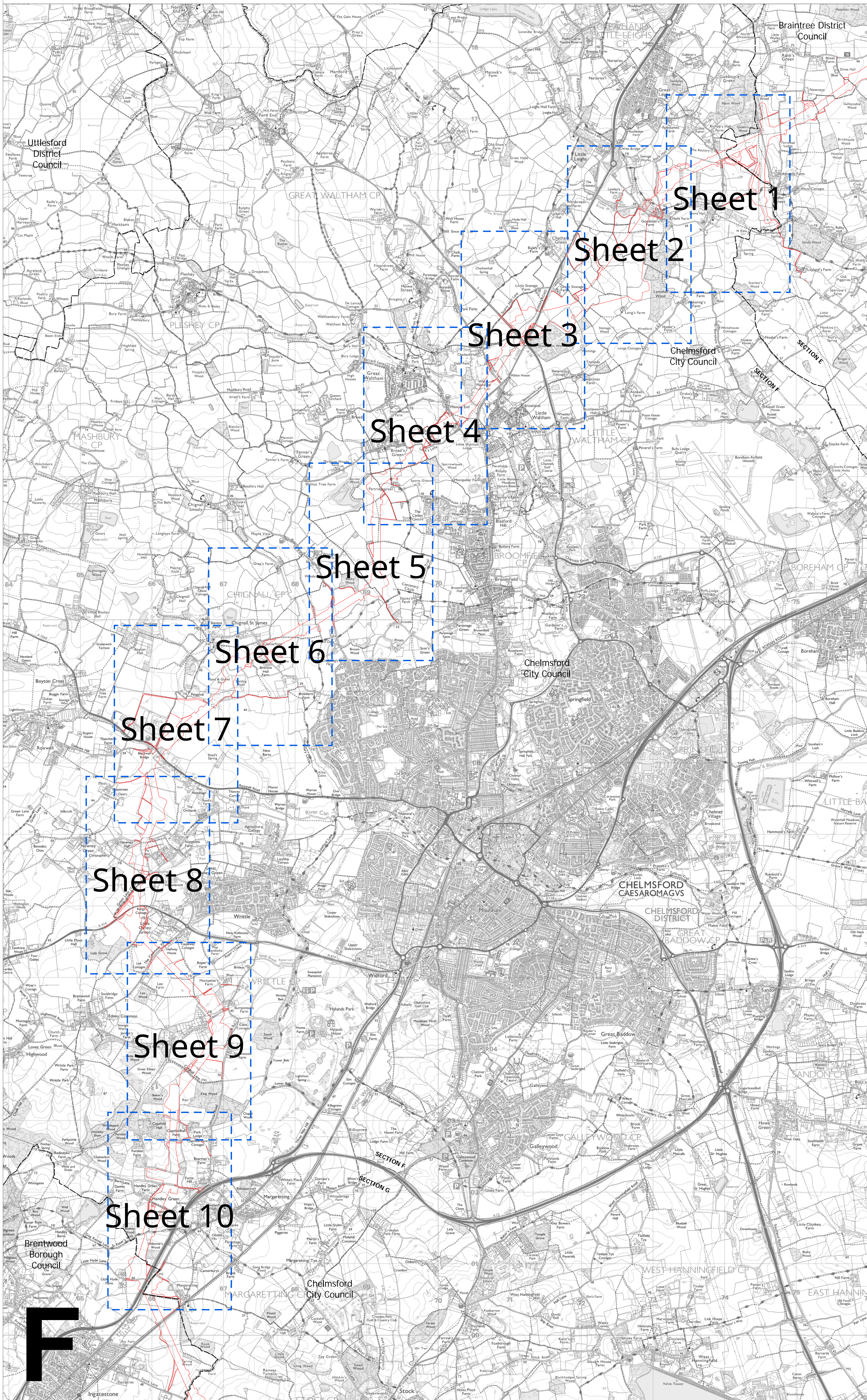


SITE MAP



Legend

- - - Local authority boundary
- - - Section boundary & local authority boundary
- ..... Section boundary
- Sheet Index
- Order Limits



Notes

1. For additional detail on the plan suites, please refer to the Guide to Plans (document reference 2.0), located in the Volume 2 of the DCO application.
2. This drawing is scaled at paper size A0, therefore any prints taken at smaller sizes will affect accuracy of the measurement units and should not be scaled against.

Coordinate System: British National Grid

Sheet X Centroid Coordinate : 569889 Sheet Y Centroid Coordinate : 208832



BACKGROUND MAPPING INFORMATION HAS BEEN REPRODUCED FROM THE ORDNANCE SURVEY BY PERMISSION OF ORDNANCE SURVEY OF THE CONTROLLER OF HIS MAJESTY'S STATIONERY OFFICE. © CROWN COPYRIGHT AND DATABASE RIGHTS(2025) LICENCE OS100024241 AND AC0000807946.

Issue	Date	Remarks	Drawn	Checked	Approved
C	MAY-2026	For deadline four	CLJ	KPA	TPR
B	OCT-2025	October 2025 Update	CLJ	KPA	TPR
A	AUG-2025	For DCO Submission	CLJ	KPA	TPR

Title:

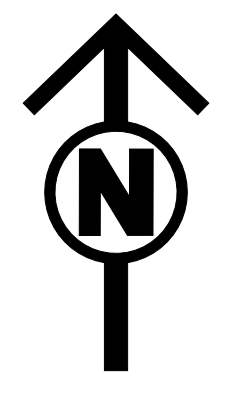
THE NATIONAL GRID (NORWICH TO TILBURY) ORDER  
LAND PLANS KEY PLAN  
REGULATION 5(2)(i)-(iii)  
SECTION F (SHEET 1 OF 1,  
BRAINTREE DISTRICT COUNCIL,  
CHELMSFORD CITY COUNCIL  
AND BRENTWOOD BOROUGH COUNCIL)

**nationalgrid**

PINS Application Number  
EN020027

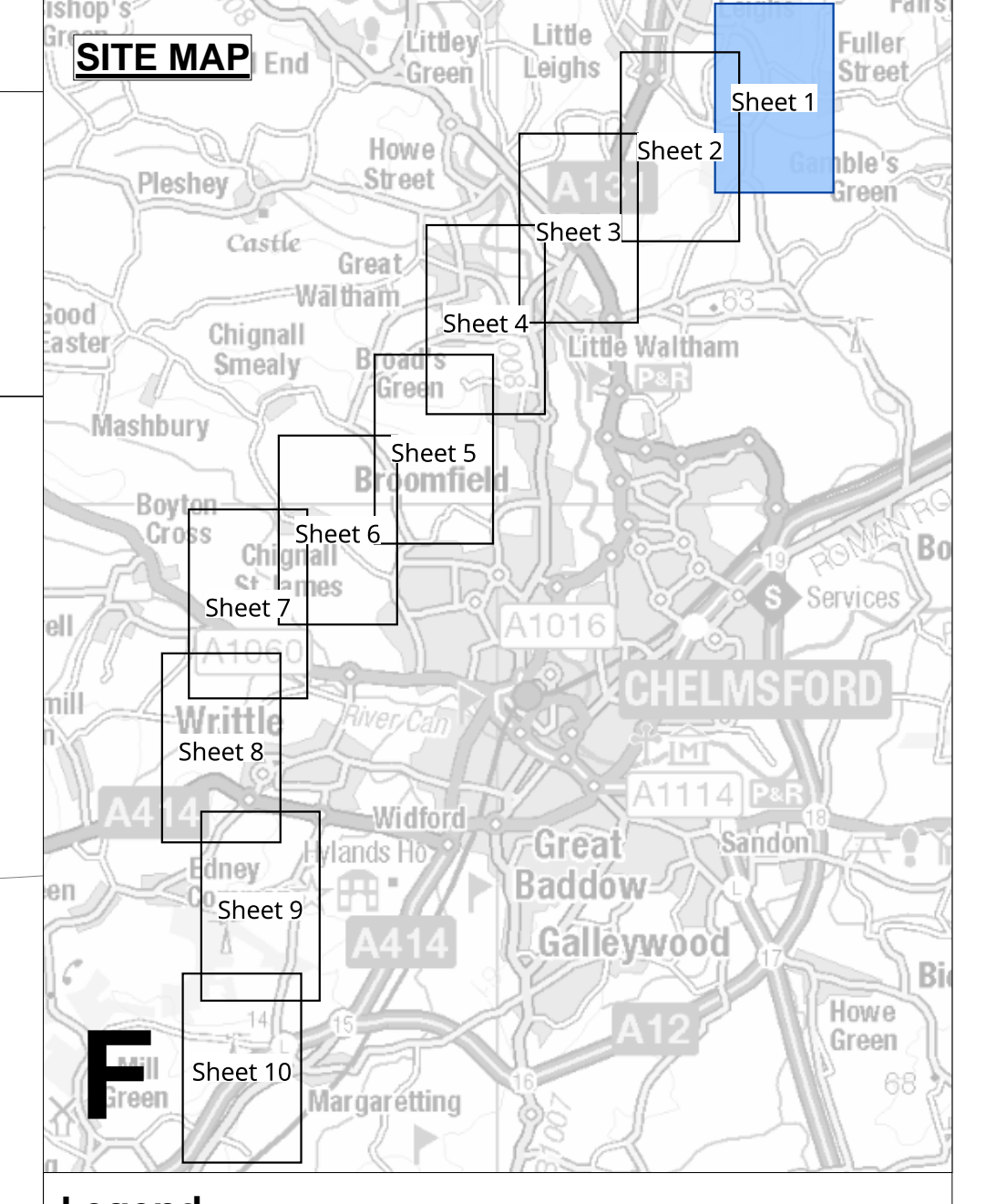
National Grid Drawing Reference  
AENC-TQST-LAN-DWG-0002

Scale	Sheet Size	Sheet	Issue
1:18,000	A0	SHEET 1 of 1	C

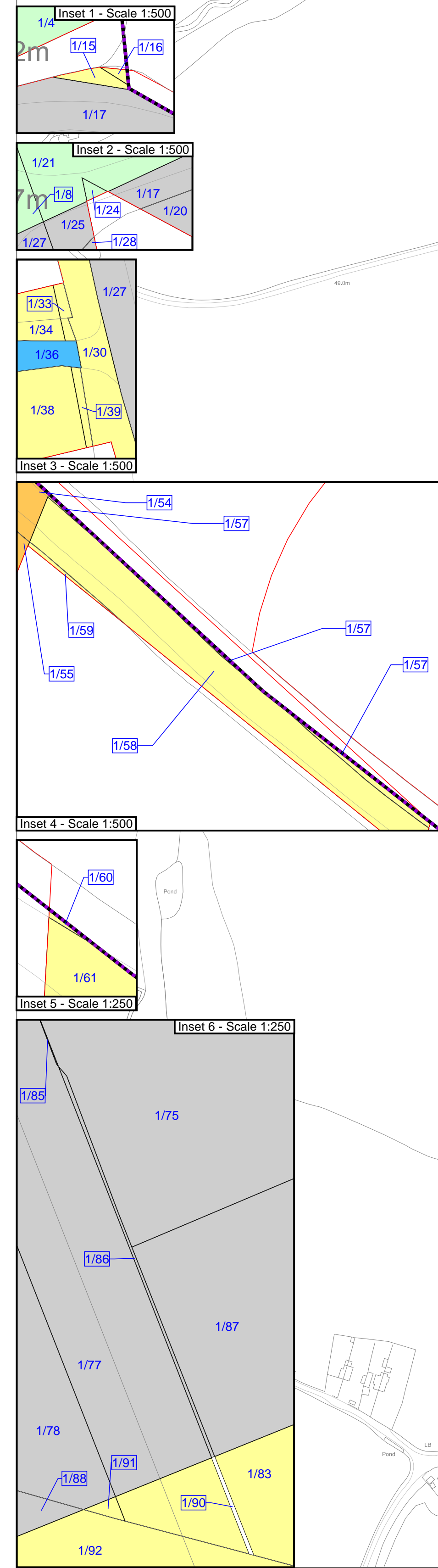
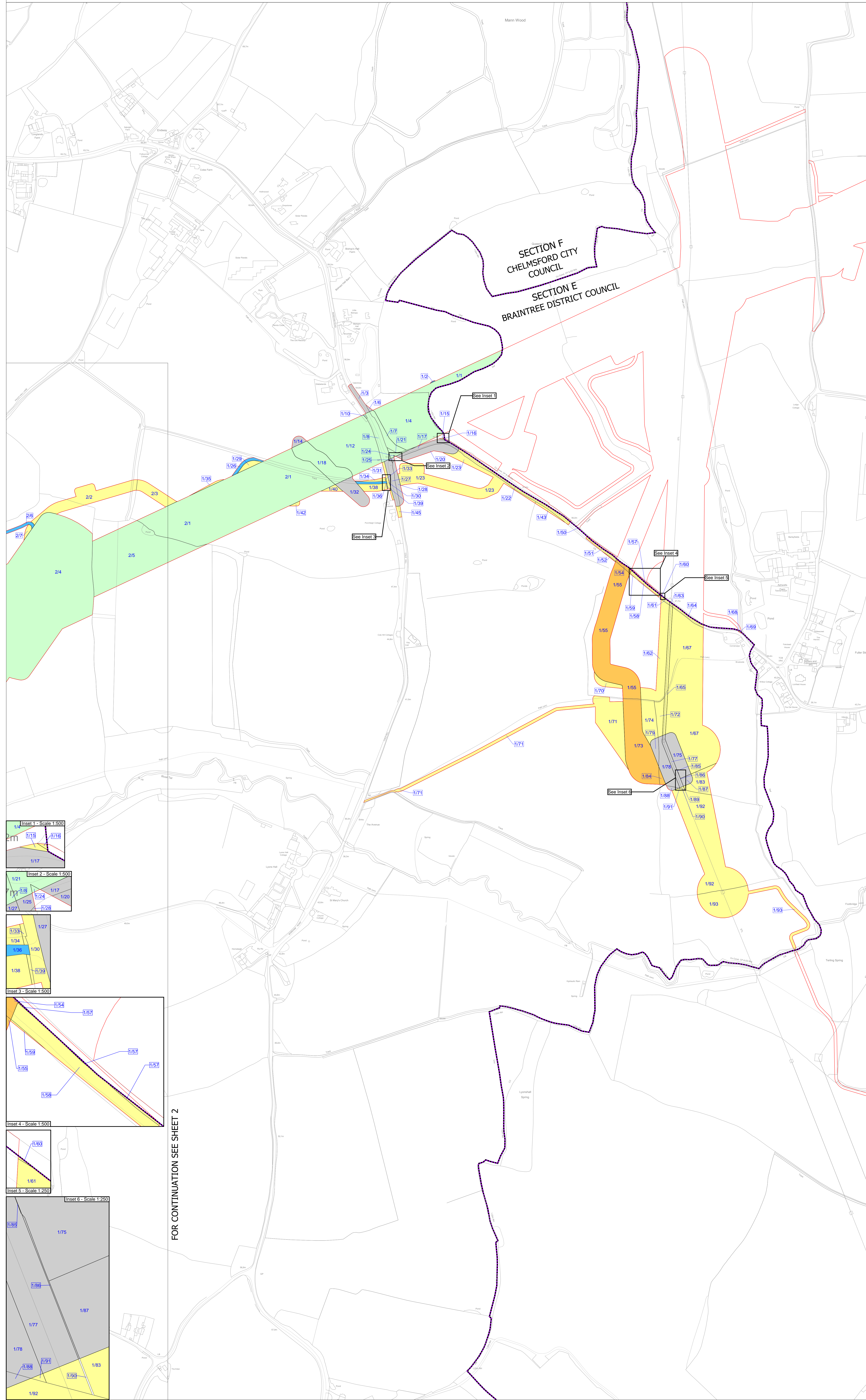


THE NATIONAL GRID (NORWICH TO TILBURY) ORDER  
 LAND PLANS  
 REGULATION 5(2)(i)-(iii)  
 SECTION F (SHEET 1 OF 10,  
 CHELMSFORD CITY COUNCIL AND BRAINTREE DISTRICT COUNCIL)

Application Document 2.2



- Legend**
- Local authority boundary
  - Section boundary & local authority boundary
  - ..... Section boundary
  - Sheet index outlines
  - Order Limits
  - Class 1 - Compulsory acquisition of land
  - Class 2 - Compulsory acquisition of rights - Overhead line
  - Class 3 - Compulsory acquisition of rights - Underground cable system
  - Class 4 - Compulsory acquisition of rights - Overhead line and underground cable system
  - Class 5 - Compulsory acquisition of rights - Access
  - Class 6 - Compulsory acquisition of rights - Drainage
  - Class 7 - Temporary use
  - Class 8 - Land not subject to powers of acquisition nor temporary use



**Notes**

- For additional detail on the plan suites, please refer to the Guide to Plans (document reference 2.0), located in the Volume 2 of the DCO application.
- This drawing is scaled at paper size A0, therefore any prints taken at smaller sizes will affect accuracy of the measurement units and should not be scaled against.

Coordinate System: British National Grid  
 Sheet X Centroid Coordinate: 574051 Sheet Y Centroid Coordinate: 219556

BACKGROUND MAPPING INFORMATION HAS BEEN REPRODUCED FROM THE ORDINANCE SURVEY BY PERMISSION OF ORDINANCE SURVEY OF THE CONTROLLER OF HIS MAJESTY'S STATIONERY OFFICE. © CROWN COPYRIGHT AND DATABASE RIGHTS(2025) LICENCE OS100024241 AND AG0000807946.

Issue	Date	Remarks	Drawn	Checked	Approved
C	MAY-2026	For deadline four	CLJ	RCA	KPA
B	OCT-2025	October 2025 Update	BBU	AMI	CLJ
A	AUG-2025	For DCO Submission	BBU	CBE	CLJ

Title:  
 THE NATIONAL GRID (NORWICH TO TILBURY) ORDER LAND PLANS REGULATION 5(2)(i)-(iii) SECTION F (SHEET 1 OF 10 CHELMSFORD CITY COUNCIL AND BRAINTREE DISTRICT COUNCIL)

**nationalgrid**

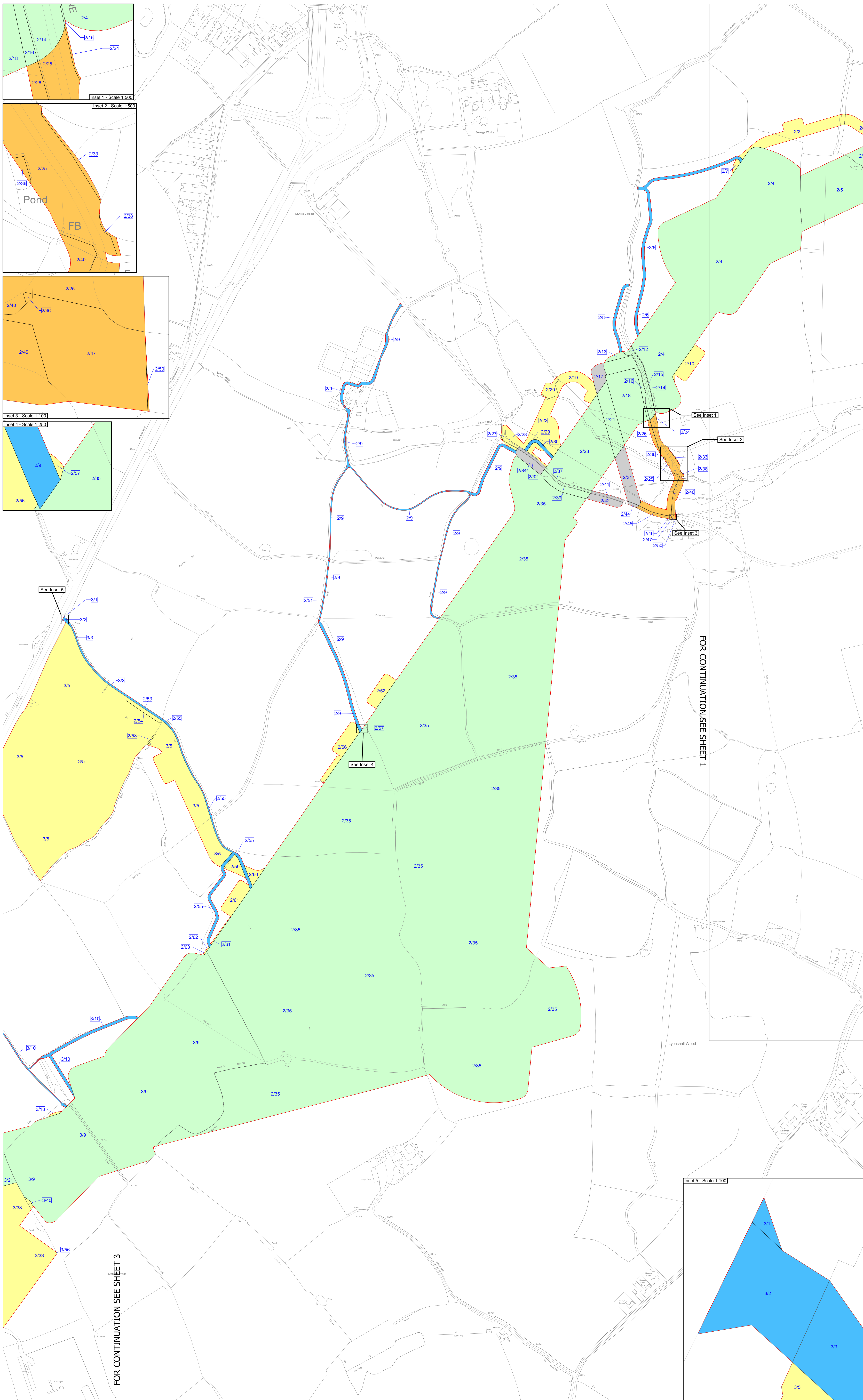
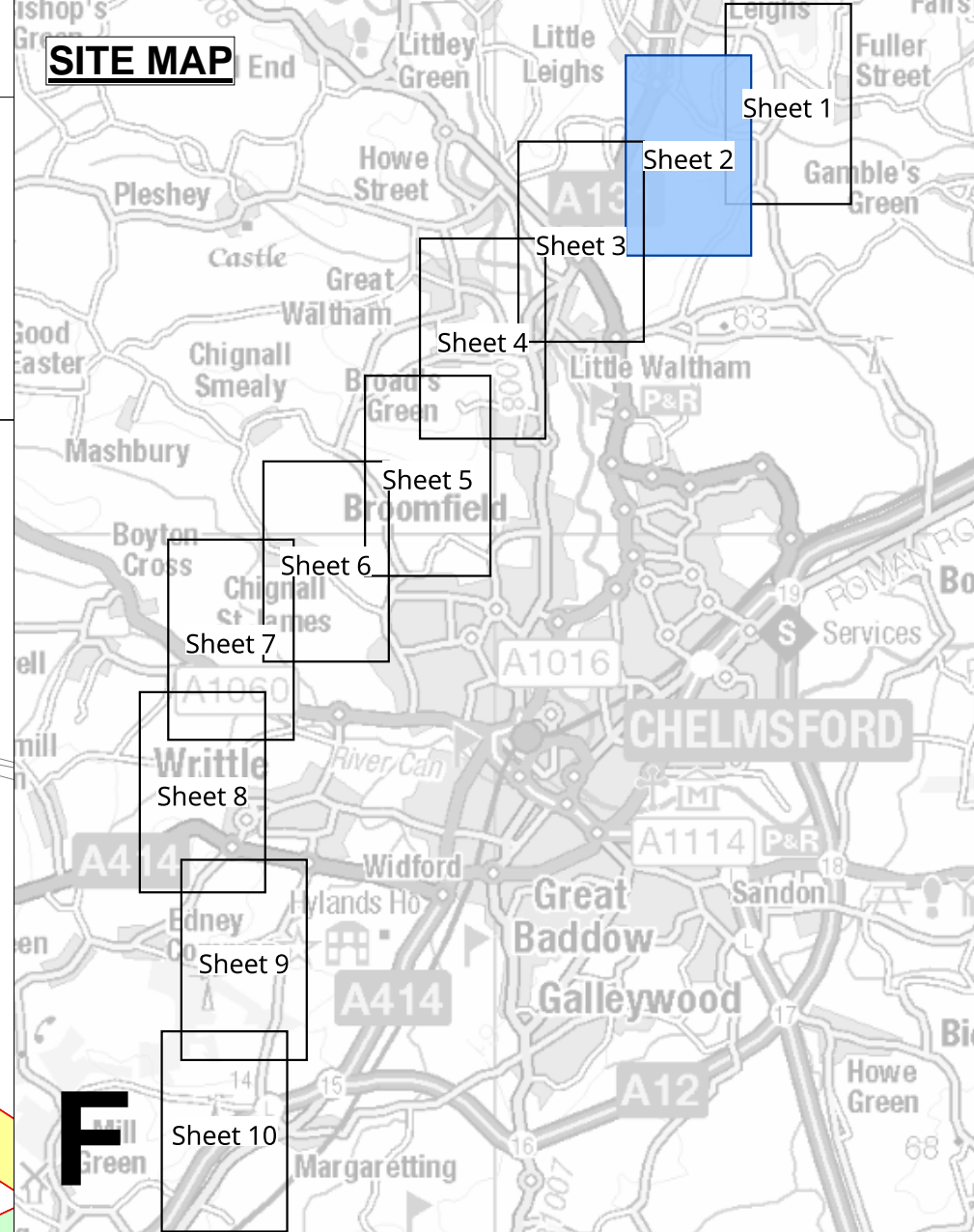
PINS Application Number: EN020027

National Grid Drawing Reference: AENC-TQST-LAN-DWG-0002

Scale	Sheet Size	Sheet	Issue
1:2,500	A0	SHEET 1 of 10	C

THE NATIONAL GRID (NORWICH TO TILBURY) ORDER  
 LAND PLANS  
 REGULATION 5(2)(i)-(iii)  
 SECTION F (SHEET 2 OF 10,  
 CHELMSFORD CITY COUNCIL)

Application Document 2.2



- Legend**
- Local authority boundary
  - Section boundary & local authority boundary
  - ..... Section boundary
  - Sheet index outlines
  - Order Limits
  - Class 1 - Compulsory acquisition of land
  - Class 2 - Compulsory acquisition of rights - Overhead line
  - Class 3 - Compulsory acquisition of rights - Underground cable system
  - Class 4 - Compulsory acquisition of rights - Overhead line and underground cable system
  - Class 5 - Compulsory acquisition of rights - Access
  - Class 6 - Compulsory acquisition of rights - Drainage
  - Class 7 - Temporary use
  - Class 8 - Land not subject to powers of acquisition nor temporary use

**Notes**

1. For additional detail on the plan suites, please refer to the Guide to Plans (document reference 2.0), located in the Volume 2 of the DCO application.
2. This drawing is scaled at paper size A0, therefore any prints taken at smaller sizes will affect accuracy of the measurement units and should not be scaled against.

Coordinate System: British National Grid  
 Sheet X Centroid Coordinate : 572670 Sheet Y Centroid Coordinate : 215243

BACKGROUND MAPPING INFORMATION HAS BEEN REPRODUCED FROM THE ORDINANCE SURVEY BY PERMISSION OF ORDINANCE SURVEY OF THE CONTROLLER OF HIS MAJESTY'S STATIONERY OFFICE. © CROWN COPYRIGHT AND DATABASE RIGHTS(2025) LICENCE OS100024241 AND AG000807946.

Issue	Date	Remarks	Drawn	Checked	Approved
C	MAY-2026	For deadline four	CLJ	RCA	KPA
B	OCT-2025	October 2025 Update	BBU	AMI	CLJ
A	AUG-2025	For DCO Submission	BBU	AMI	CLJ

**Title:**  
 THE NATIONAL GRID  
 (NORWICH TO TILBURY) ORDER  
 LAND PLANS  
 REGULATION 5(2)(i)-(iii)  
 SECTION F (SHEET 2 OF 10  
 CHELMSFORD CITY COUNCIL)

**nationalgrid**

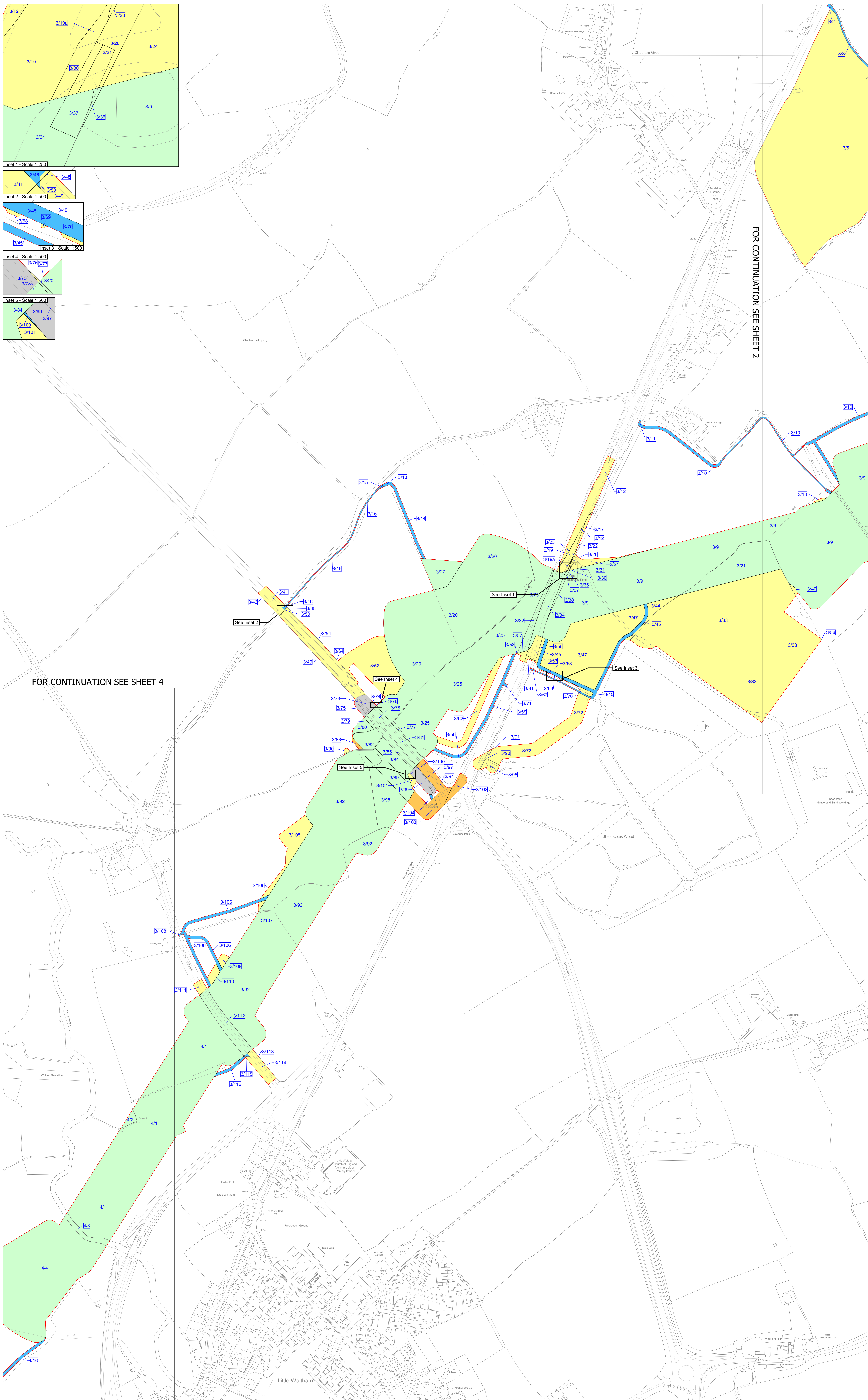
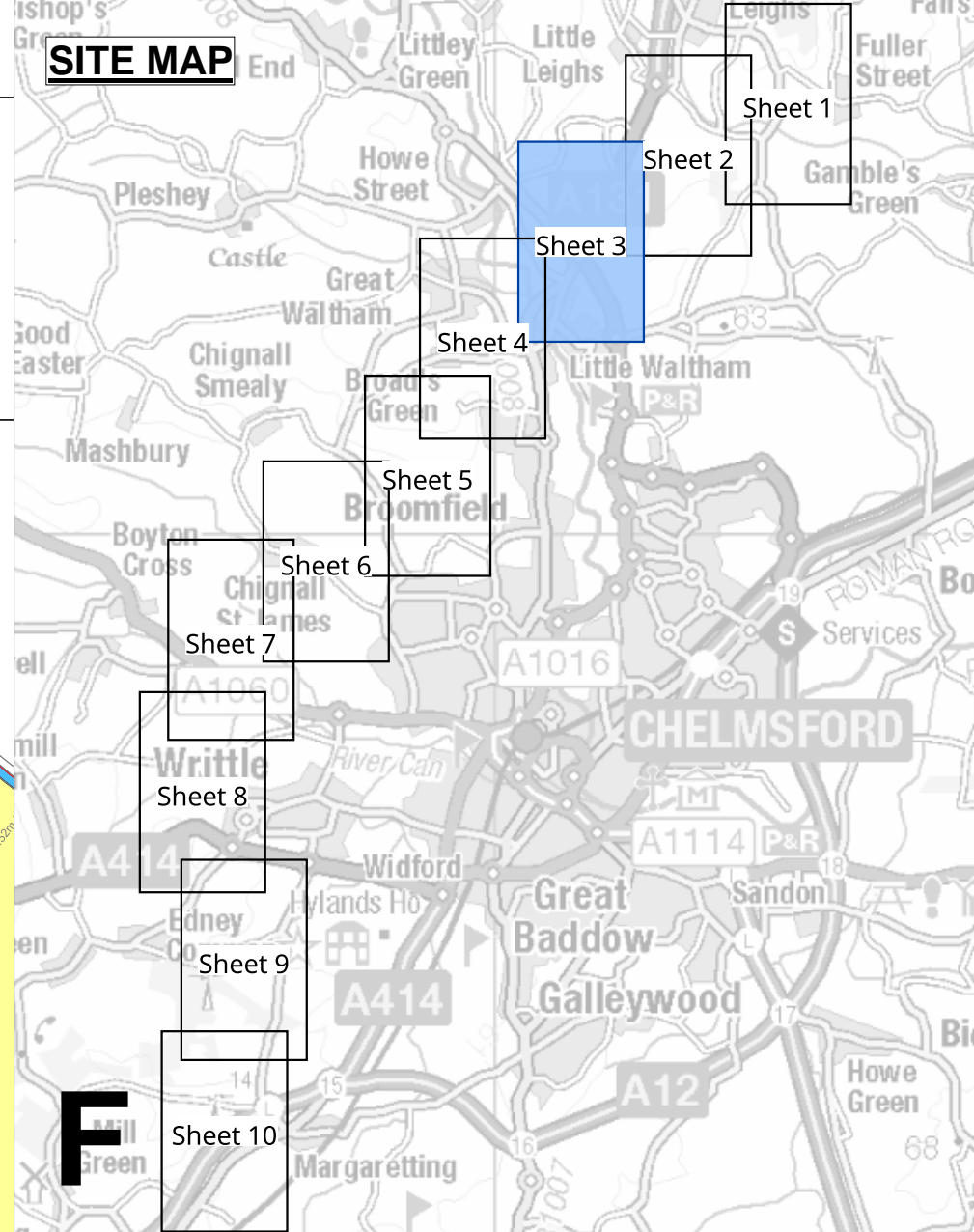
**PINS Application Number:**  
 EN020027

**National Grid Drawing Reference:**  
 AENC-TQST-LAN-DWG-0002

Scale	Sheet Size	Sheet	Issue
1:2,500	A0	SHEET 2 of 10	C

THE NATIONAL GRID (NORWICH TO TILBURY) ORDER  
 LAND PLANS  
 REGULATION 5(2)(i)-(iii)  
 SECTION F (SHEET 3 OF 10,  
 CHELMSFORD CITY COUNCIL)

Application Document 2.2



- Legend**
- Local authority boundary
  - Section boundary & local authority boundary
  - ..... Section boundary
  - Sheet index outlines
  - Order Limits
  - Class 1 - Compulsory acquisition of land
  - Class 2 - Compulsory acquisition of rights - Overhead line
  - Class 3 - Compulsory acquisition of rights - Underground cable system
  - Class 4 - Compulsory acquisition of rights - Overhead line and underground cable system
  - Class 5 - Compulsory acquisition of rights - Access
  - Class 6 - Compulsory acquisition of rights - Drainage
  - Class 7 - Temporary use
  - Class 8 - Land not subject to powers of acquisition nor temporary use

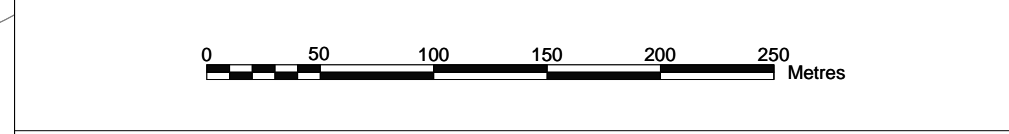
FOR CONTINUATION SEE SHEET 2

FOR CONTINUATION SEE SHEET 4

**Notes**

- For additional detail on the plan suites, please refer to the Guide to Plans (document reference 2.0), located in the Volume 2 of the DCO application.
- This drawing is scaled at paper size A0, therefore any prints taken at smaller sizes will affect accuracy of the measurement units and should not be scaled against.

Coordinate System: British National Grid  
 Sheet X Centroid Coordinate : 571184 Sheet Y Centroid Coordinate : 214051



BACKGROUND MAPPING INFORMATION HAS BEEN REPRODUCED FROM THE ORDINANCE SURVEY BY PERMISSION OF ORDINANCE SURVEY OF THE CONTROLLER OF HIS MAJESTY'S STATIONERY OFFICE. © CROWN COPYRIGHT AND DATABASE RIGHTS(2025) LICENCE OS100024241 AND AG000807946.

C	MAY-2026	For deadline four	CLJ	RCA	KPA
B	OCT-2025	October 2025 Update	BBU	AMI	CLJ
A	AUG-2025	For DCO Submission	BBU	KGA	CLJ

Issue	Date	Remarks	Drawn	Checked	Approved
-------	------	---------	-------	---------	----------

Title:  
 THE NATIONAL GRID (NORWICH TO TILBURY) ORDER  
 LAND PLANS  
 REGULATION 5(2)(i)-(iii)  
 SECTION F (SHEET 3 OF 10  
 CHELMSFORD CITY COUNCIL)



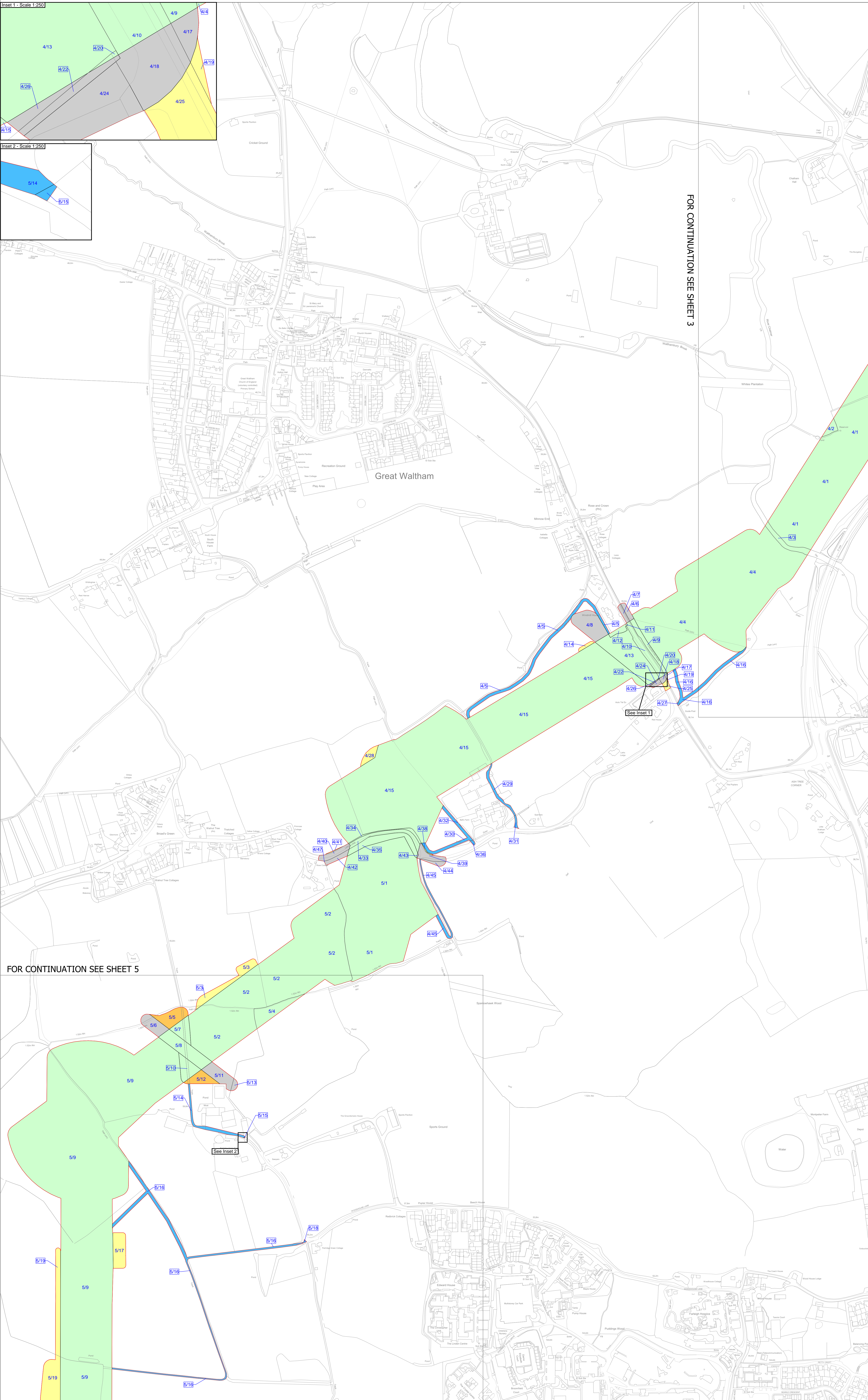
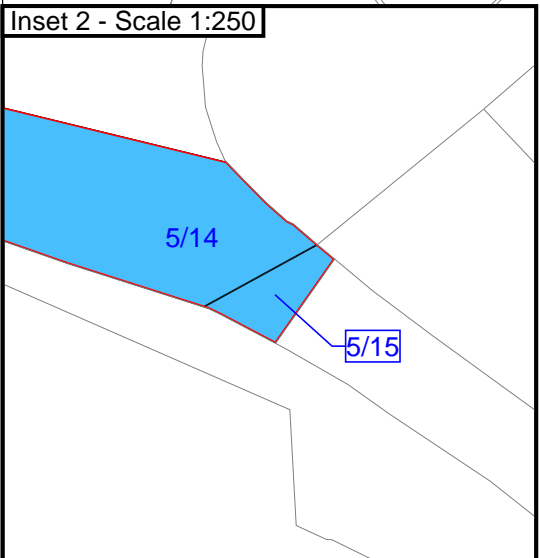
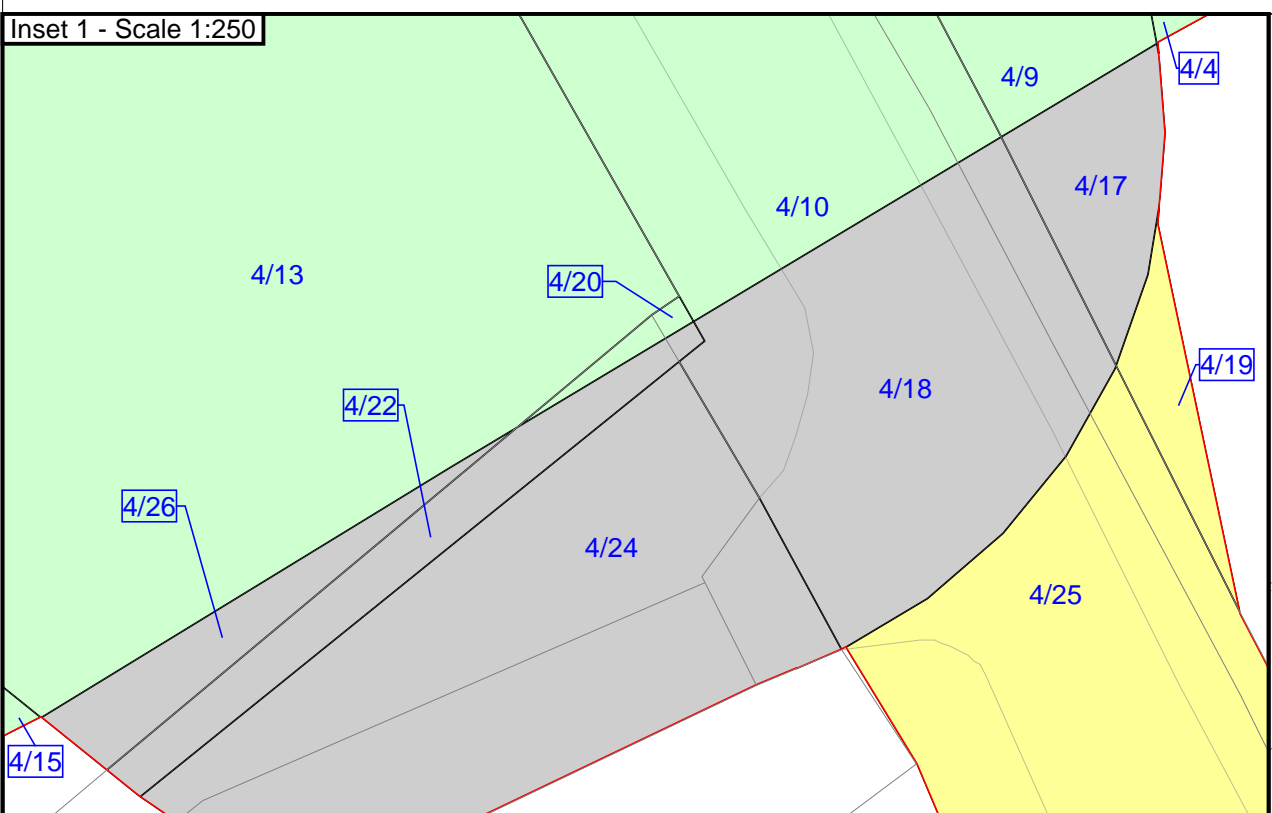
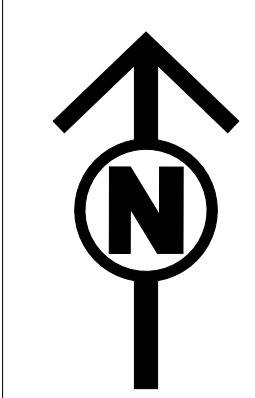
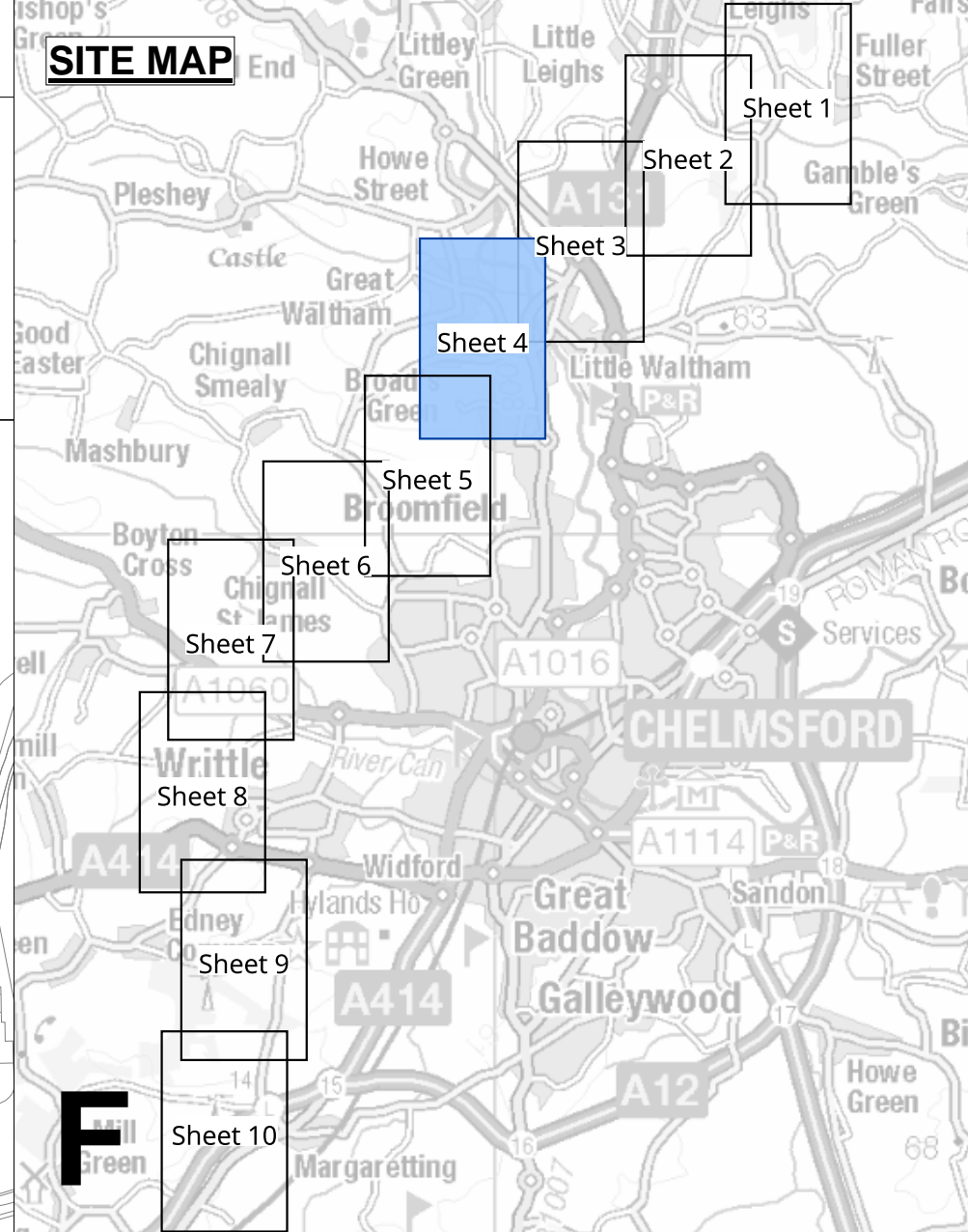
PINS Application Number: EN020027

National Grid Drawing Reference: AENC-TQST-LAN-DWG-0002

Scale	Sheet Size	Sheet	Issue
1:2,500	A0	SHEET 3 of 10	C

THE NATIONAL GRID (NORWICH TO TILBURY) ORDER  
 LAND PLANS  
 REGULATION 5(2)(i)-(iii)  
 SECTION F (SHEET 4 OF 10,  
 CHELMSFORD CITY COUNCIL)

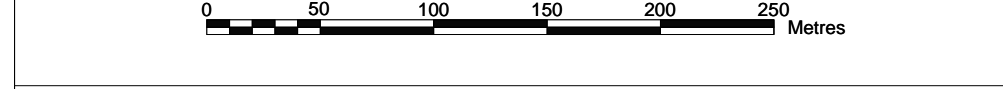
Application Document 2.2



- Legend**
- Local authority boundary
  - Section boundary & local authority boundary
  - ..... Section boundary
  - Sheet index cutlines
  - Order Limits
  - Class 1 - Compulsory acquisition of land
  - Class 2 - Compulsory acquisition of rights - Overhead line
  - Class 3 - Compulsory acquisition of rights - Underground cable system
  - Class 4 - Compulsory acquisition of rights - Overhead line and underground cable system
  - Class 5 - Compulsory acquisition of rights - Access
  - Class 6 - Compulsory acquisition of rights - Drainage
  - Class 7 - Temporary use
  - Class 8 - Land not subject to powers of acquisition nor temporary use

- Notes**
1. For additional detail on the plan suites, please refer to the Guide to Plans (document reference 2.0), located in the Volume 2 of the DCO application.
  2. This drawing is scaled at paper size A0, therefore any prints taken at smaller sizes will affect accuracy of the measurement units and should not be scaled against.

Coordinate System: British National Grid  
 Sheet X Centroid Coordinate: 569821 Sheet Y Centroid Coordinate: 212709



BACKGROUND MAPPING INFORMATION HAS BEEN REPRODUCED FROM THE ORDINANCE SURVEY BY PERMISSION OF ORDINANCE SURVEY OF THE CONTROLLER OF HIS MAJESTY'S STATIONERY OFFICE. © CROWN COPYRIGHT AND DATABASE RIGHTS (2025) LICENCE OS100024241 AND ACD000807946.

C	MAY-2026	For deadline four	CLJ	RCA	KPA
B	OCT-2025	October 2025 Update	SGR	AMI	CLJ
A	AUG-2025	For DCO Submission	SGR	KGA	CLJ

Issue	Date	Remarks	Drawn	Checked	Approved
-------	------	---------	-------	---------	----------

Title:  
 THE NATIONAL GRID (NORWICH TO TILBURY) ORDER LAND PLANS REGULATION 5(2)(i)-(iii) SECTION F (SHEET 4 OF 10 CHELMSFORD CITY COUNCIL)



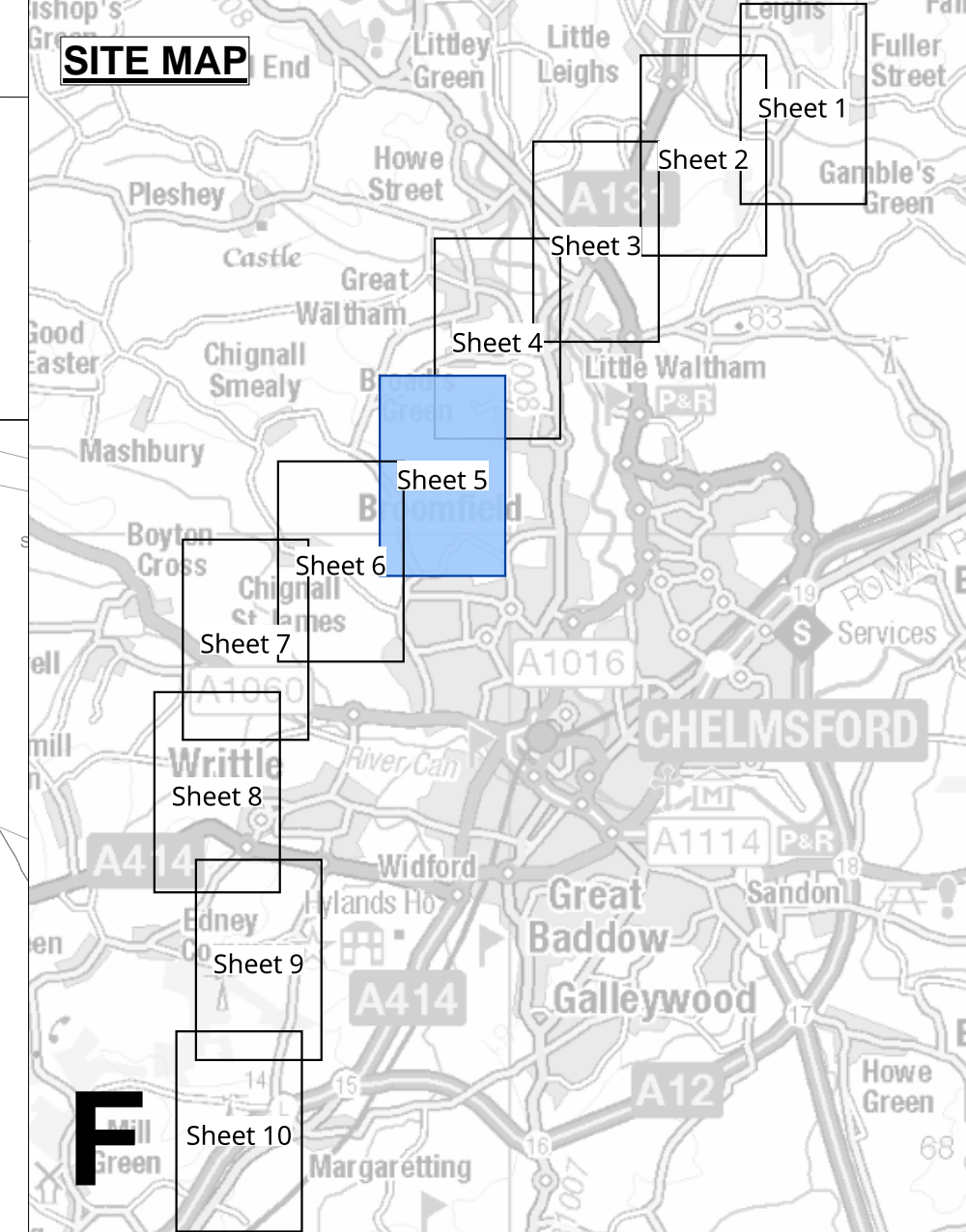
PINS Application Number: EN020027

National Grid Drawing Reference: AENC-TQST-LAN-DWG-0002

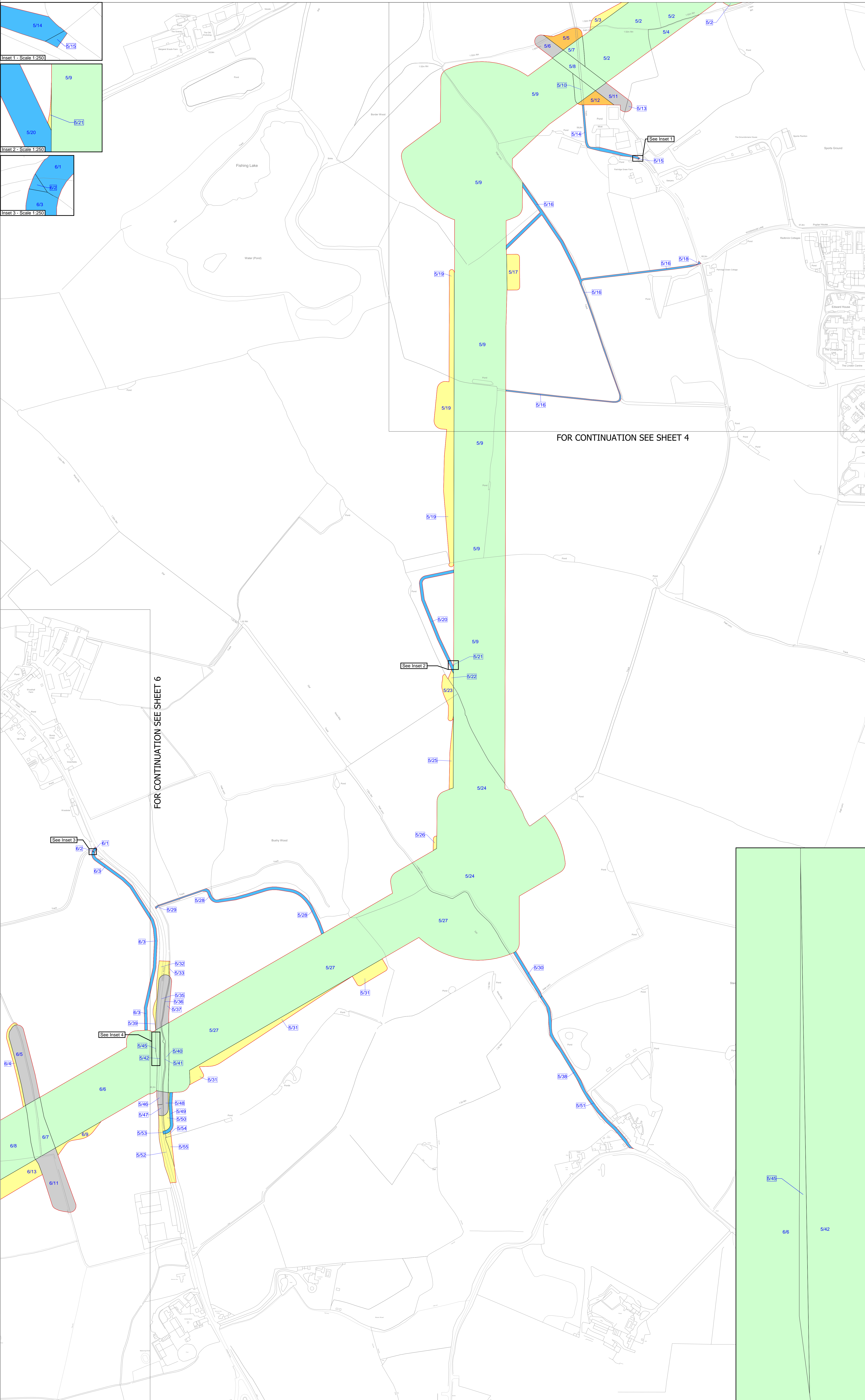
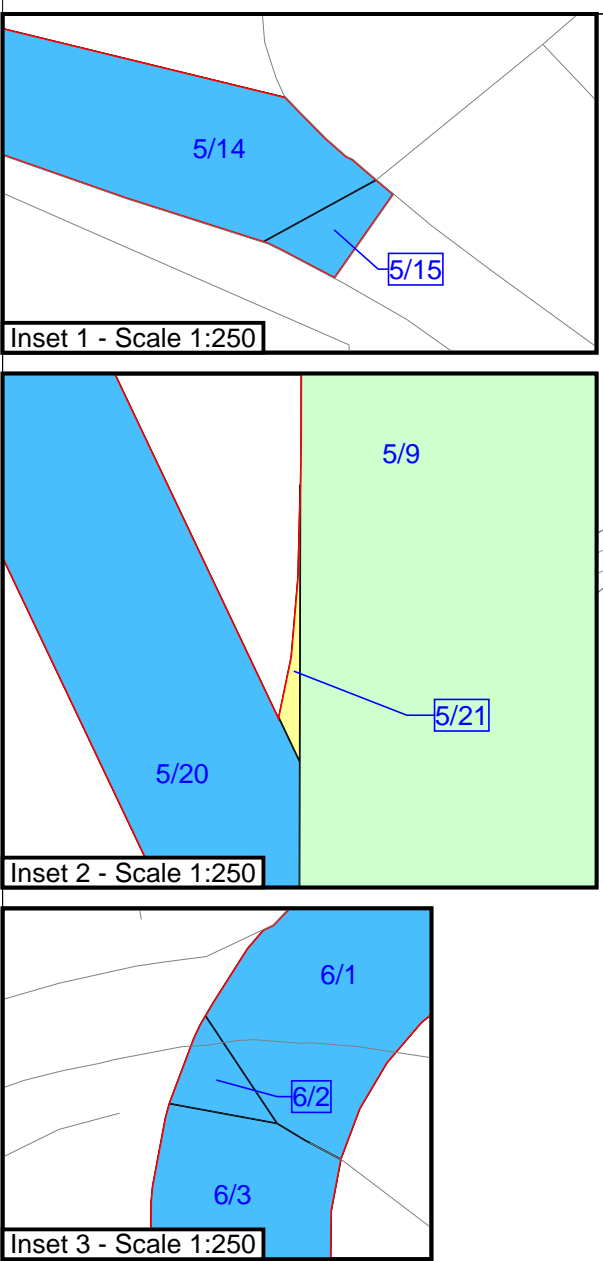
Scale	Sheet Size	Sheet	Issue
1:2,500	A0	SHEET 4 of 10	C

THE NATIONAL GRID (NORWICH TO TILBURY) ORDER  
 LAND PLANS  
 REGULATION 5(2)(i)-(iii)  
 SECTION F (SHEET 5 OF 10,  
 CHELMSFORD CITY COUNCIL)

Application Document 2.2



- Legend**
- Local authority boundary
  - Section boundary & local authority boundary
  - ..... Section boundary
  - Sheet index outlines
  - Order Limits
  - Class 1 - Compulsory acquisition of land
  - Class 2 - Compulsory acquisition of rights - Overhead line
  - Class 3 - Compulsory acquisition of rights - Underground cable system
  - Class 4 - Compulsory acquisition of rights - Overhead line and underground cable system
  - Class 5 - Compulsory acquisition of rights - Access
  - Class 6 - Compulsory acquisition of rights - Drainage
  - Class 7 - Temporary use
  - Class 8 - Land not subject to powers of acquisition nor temporary use



FOR CONTINUATION SEE SHEET 4

FOR CONTINUATION SEE SHEET 6

**Notes**  
 1. For additional detail on the plan suites, please refer to the Guide to Plans (document reference 2.0), located in the Volume 2 of the DCO application.  
 2. This drawing is scaled at paper size A0, therefore any prints taken at smaller sizes will affect accuracy of the measurement units and should not be scaled against.

Coordinate System: British National Grid  
 Sheet X Centroid Coordinate: 569061 Sheet Y Centroid Coordinate: 210810

BACKGROUND MAPPING INFORMATION HAS BEEN REPRODUCED FROM THE ORDINANCE SURVEY BY PERMISSION OF ORDINANCE SURVEY OF THE CONTROLLER OF HIS MAJESTY'S STATIONERY OFFICE. © CROWN COPYRIGHT AND DATABASE RIGHTS(2025) LICENCE OS100024241 AND AG000807946.

Issue	Date	Remarks	Drawn	Checked	Approved
C	MAY-2026	For deadline four	CLJ	RCA	KPA
B	OCT-2025	October 2025 Update	KGA	AMI	CLJ
A	AUG-2025	For DCO Submission	KGA	CBE	CLJ

Title:  
 THE NATIONAL GRID (NORWICH TO TILBURY) ORDER LAND PLANS REGULATION 5(2)(i)-(iii) SECTION F (SHEET 5 OF 10 CHELMSFORD CITY COUNCIL)

**nationalgrid**

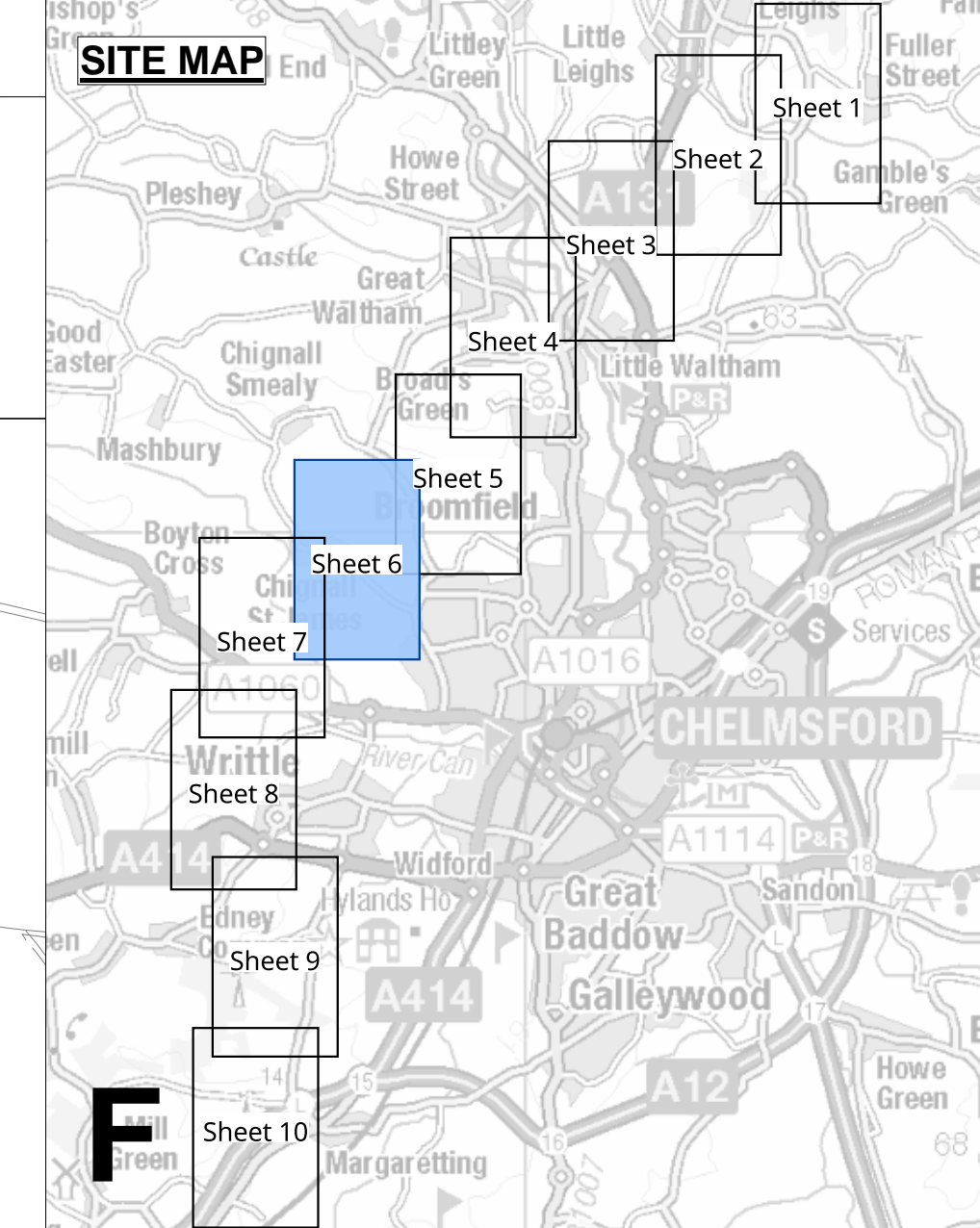
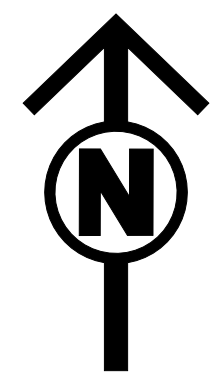
PINS Application Number: EN020027

National Grid Drawing Reference: AENC-TQST-LAN-DWG-0002

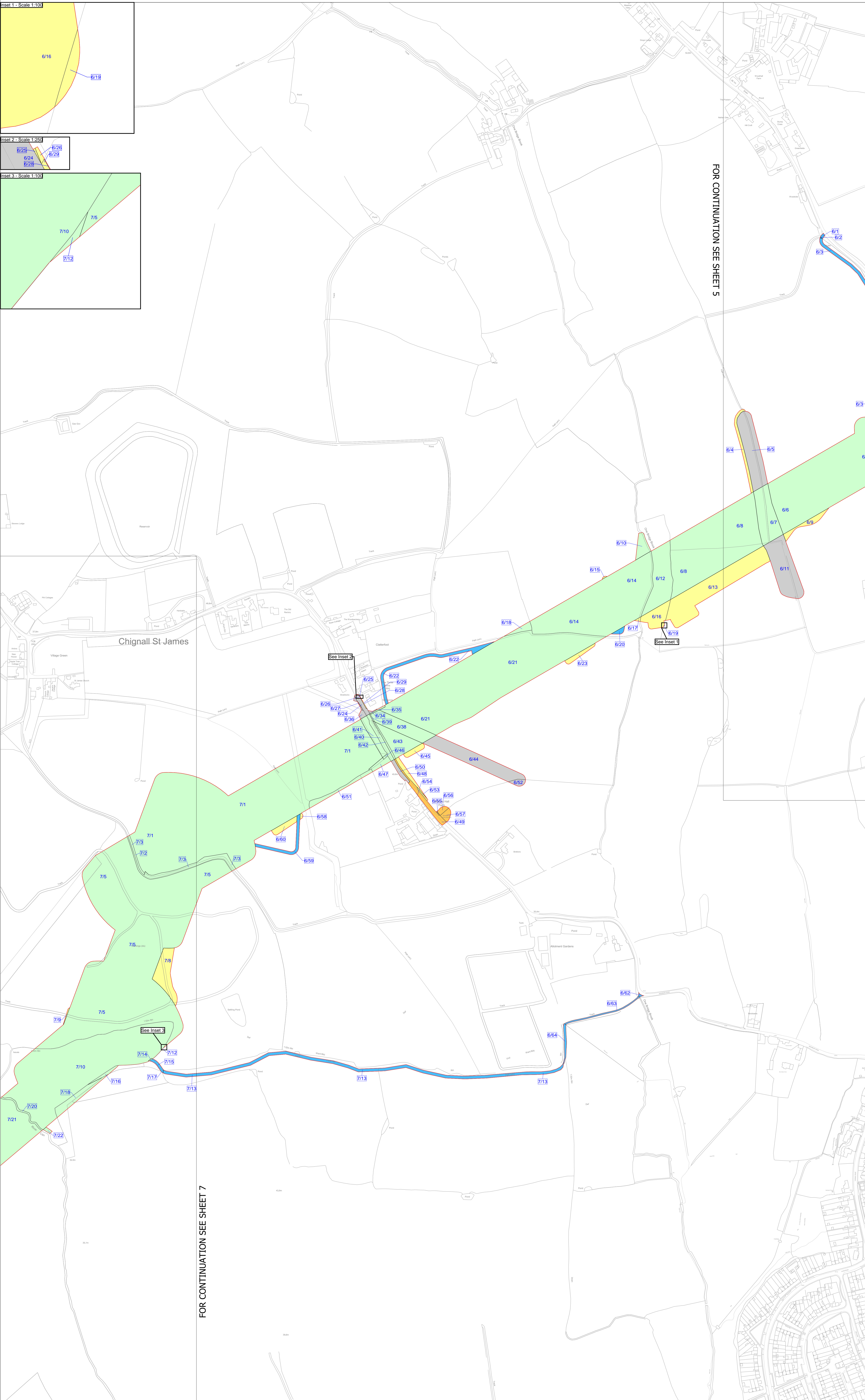
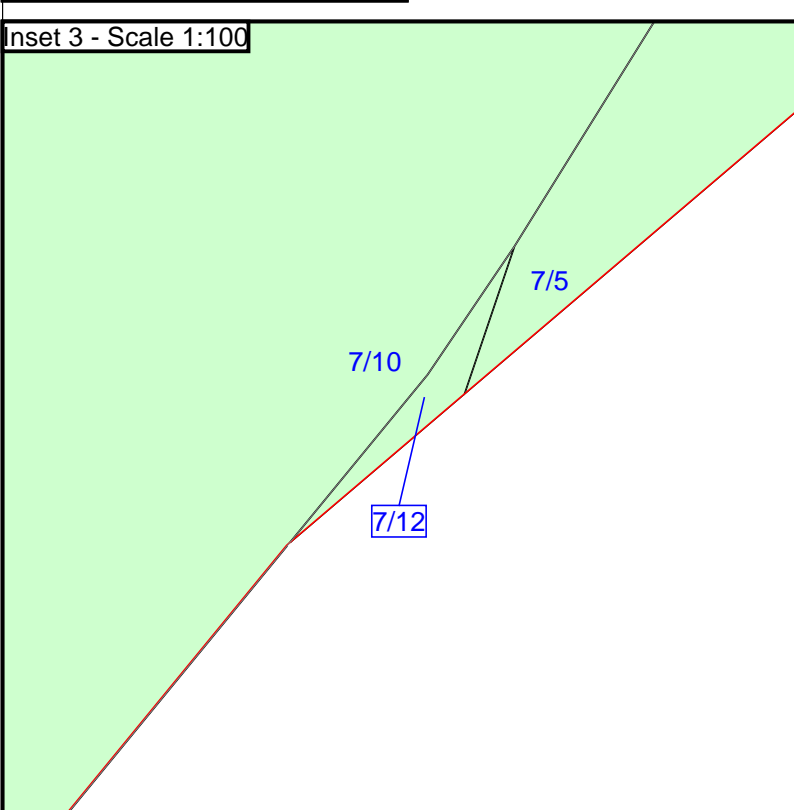
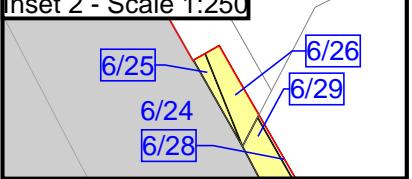
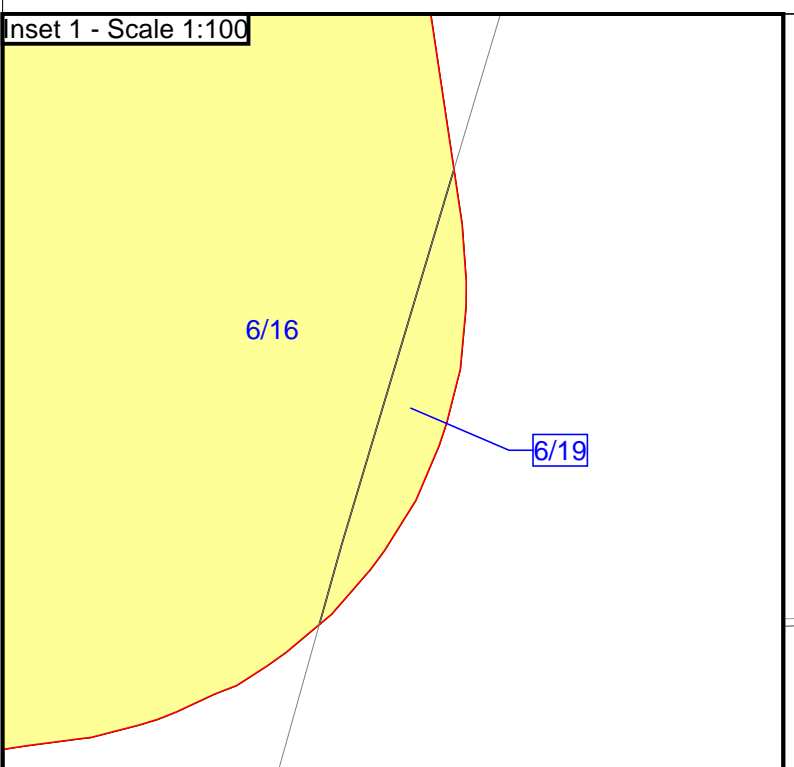
Scale	Sheet Size	Sheet	Issue
1:2,500	A0	SHEET 5 of 10	C

THE NATIONAL GRID (NORWICH TO TILBURY) ORDER  
LAND PLANS  
REGULATION 5(2)(i)-(iii)  
SECTION F (SHEET 6 OF 10,  
CHELMSFORD CITY COUNCIL)

Application Document 2.2



- Legend**
- Local authority boundary
  - Section boundary & local authority boundary
  - ..... Section boundary
  - Sheet index outlines
  - Order Limits
  - Class 1 - Compulsory acquisition of land
  - Class 2 - Compulsory acquisition of rights - Overhead line
  - Class 3 - Compulsory acquisition of rights - Underground cable system
  - Class 4 - Compulsory acquisition of rights - Overhead line and underground cable system
  - Class 5 - Compulsory acquisition of rights - Access
  - Class 6 - Compulsory acquisition of rights - Drainage
  - Class 7 - Temporary use
  - Class 8 - Land not subject to powers of acquisition nor temporary use



- Notes**
1. For additional detail on the plan suites, please refer to the Guide to Plans (document reference 2.0), located in the Volume 2 of the DCO application.
  2. This drawing is scaled at paper size A0, therefore any prints taken at smaller sizes will affect accuracy of the measurement units and should not be scaled against.

Coordinate System: British National Grid  
Sheet X Centroid Coordinate: 567854 Sheet Y Centroid Coordinate: 209624



BACKGROUND MAPPING INFORMATION HAS BEEN REPRODUCED FROM THE ORDINANCE SURVEY BY PERMISSION OF ORDINANCE SURVEY OF THE CONTROLLER OF HIS MAJESTY'S STATIONERY OFFICE. © CROWN COPYRIGHT AND DATABASE RIGHTS(2025) LICENCE OS100024241 AND AG000807946.

C	MAY-2026	For deadline four	CLJ	RCA	KPA
B	OCT-2025	October 2025 Update	SGR	AMI	CLJ
A	AUG-2025	For DCO Submission	SGR	BBU	CLJ

Issue	Date	Remarks	Drawn	Checked	Approved
-------	------	---------	-------	---------	----------

Title:  
THE NATIONAL GRID (NORWICH TO TILBURY) ORDER LAND PLANS REGULATION 5(2)(i)-(iii) SECTION F (SHEET 6 OF 10 CHELMSFORD CITY COUNCIL)



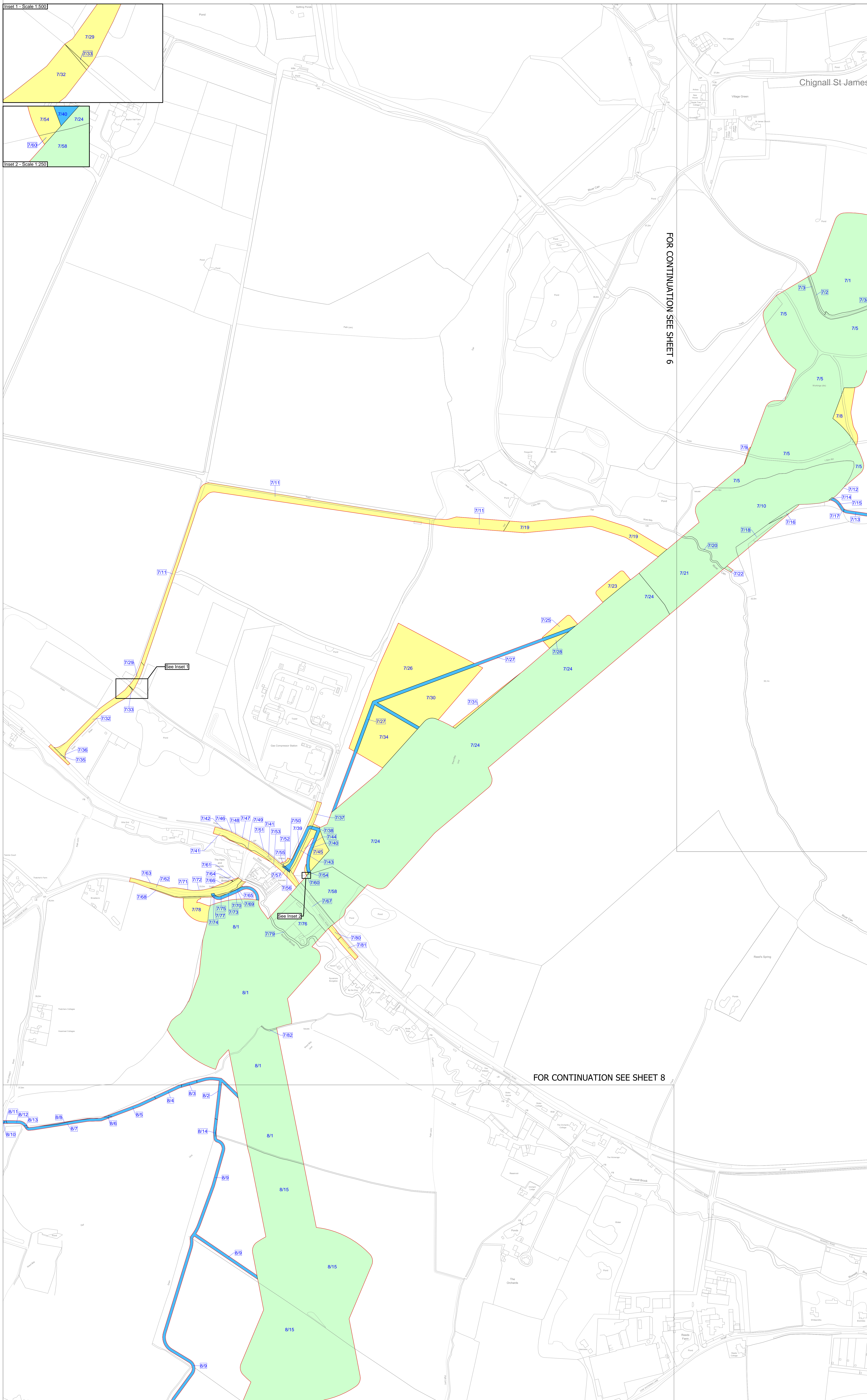
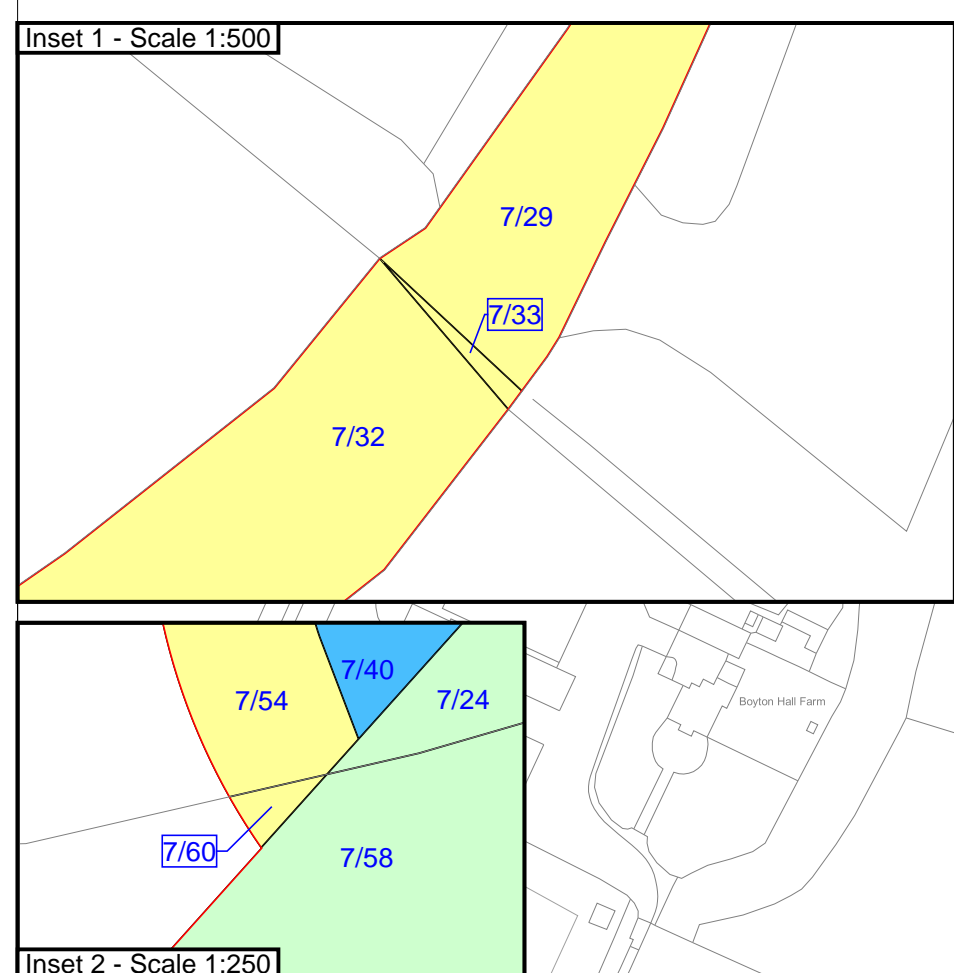
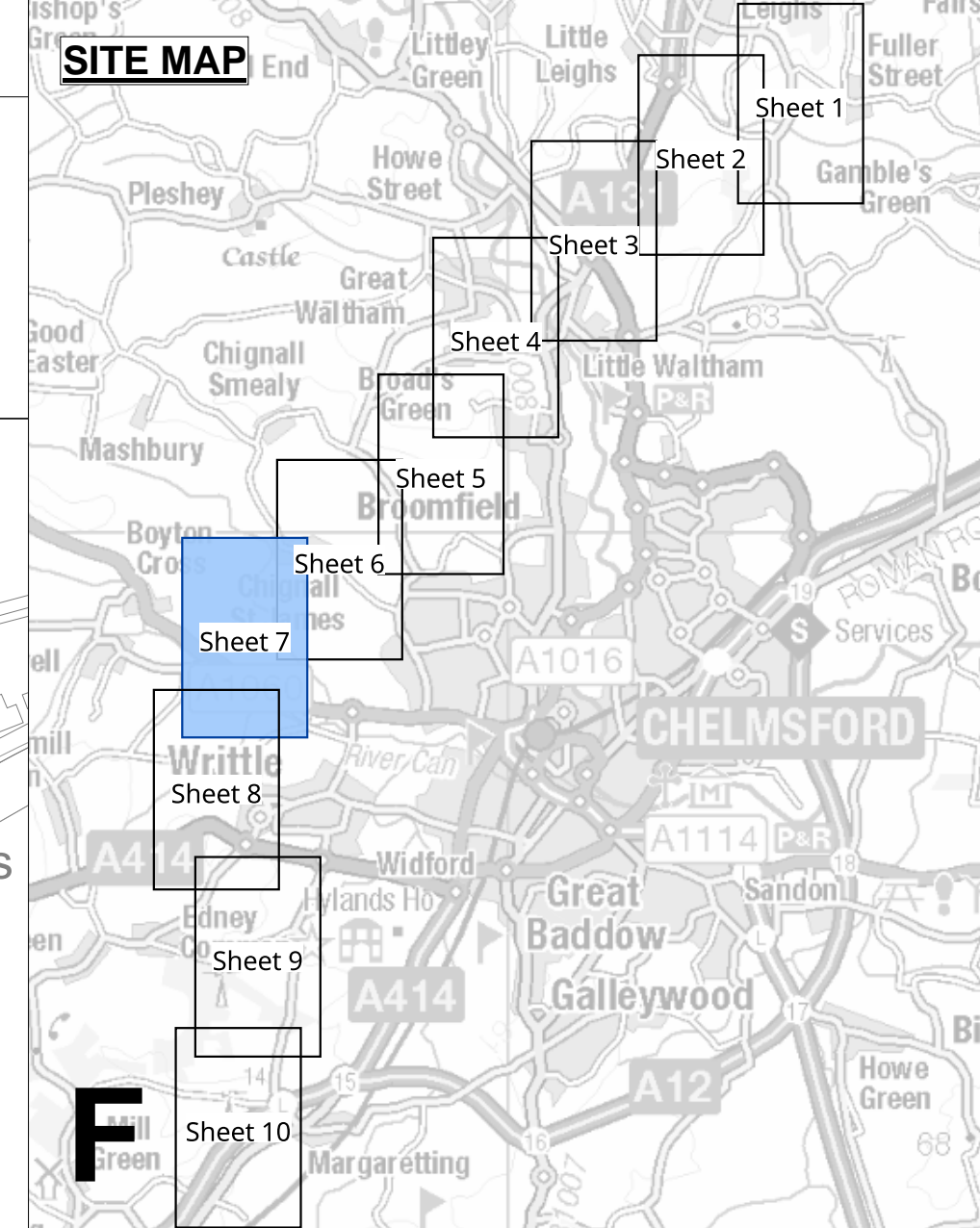
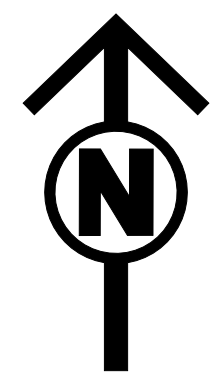
PINS Application Number: EN020027

National Grid Drawing Reference: AENC-TQST-LAN-DWG-0002

Scale	Sheet Size	Sheet	Issue
1:2,500	A0	SHEET 6 of 10	C

THE NATIONAL GRID (NORWICH TO TILBURY) ORDER  
 LAND PLANS  
 REGULATION 5(2)(i)-(iii)  
 SECTION F (SHEET 7 OF 10,  
 CHELMSFORD CITY COUNCIL)

Application Document 2.2



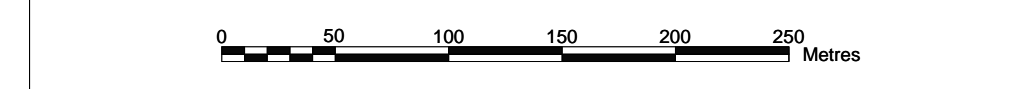
FOR CONTINUATION SEE SHEET 6

FOR CONTINUATION SEE SHEET 8

- Legend**
- Local authority boundary
  - Section boundary & local authority boundary
  - ..... Section boundary
  - Sheet index outlines
  - Order Limits
  - Class 1 - Compulsory acquisition of land
  - Class 2 - Compulsory acquisition of rights - Overhead line
  - Class 3 - Compulsory acquisition of rights - Underground cable system
  - Class 4 - Compulsory acquisition of rights - Overhead line and underground cable system
  - Class 5 - Compulsory acquisition of rights - Access
  - Class 6 - Compulsory acquisition of rights - Drainage
  - Class 7 - Temporary use
  - Class 8 - Land not subject to powers of acquisition nor temporary use

- Notes**
1. For additional detail on the plan suites, please refer to the Guide to Plans (document reference 2.0), located in the Volume 2 of the DCO application.
  2. This drawing is scaled at paper size A0, therefore any prints taken at smaller sizes will affect accuracy of the measurement units and should not be scaled against.

Coordinate System: British National Grid  
 Sheet X Centroid Coordinate: 566337 Sheet Y Centroid Coordinate: 208542



BACKGROUND MAPPING INFORMATION HAS BEEN REPRODUCED FROM THE ORDINANCE SURVEY BY PERMISSION OF ORDINANCE SURVEY OF THE CONTROLLER OF HIS MAJESTY'S STATIONERY OFFICE. © CROWN COPYRIGHT AND DATABASE RIGHTS (2025) LICENCE OS100024241 AND AG000807946.

C	MAY-2026	For deadline four	CLJ	RCA	KPA
B	OCT-2025	October 2025 Update	KRO	AMI	CLJ
A	AUG-2025	For DCO Submission	KRO	BBU	CLJ

Issue	Date	Remarks	Drawn	Checked	Approved
-------	------	---------	-------	---------	----------

Title:  
 THE NATIONAL GRID (NORWICH TO TILBURY) ORDER  
 LAND PLANS  
 REGULATION 5(2)(i)-(iii)  
 SECTION F (SHEET 7 OF 10  
 CHELMSFORD CITY COUNCIL)



PINS Application Number: EN020027

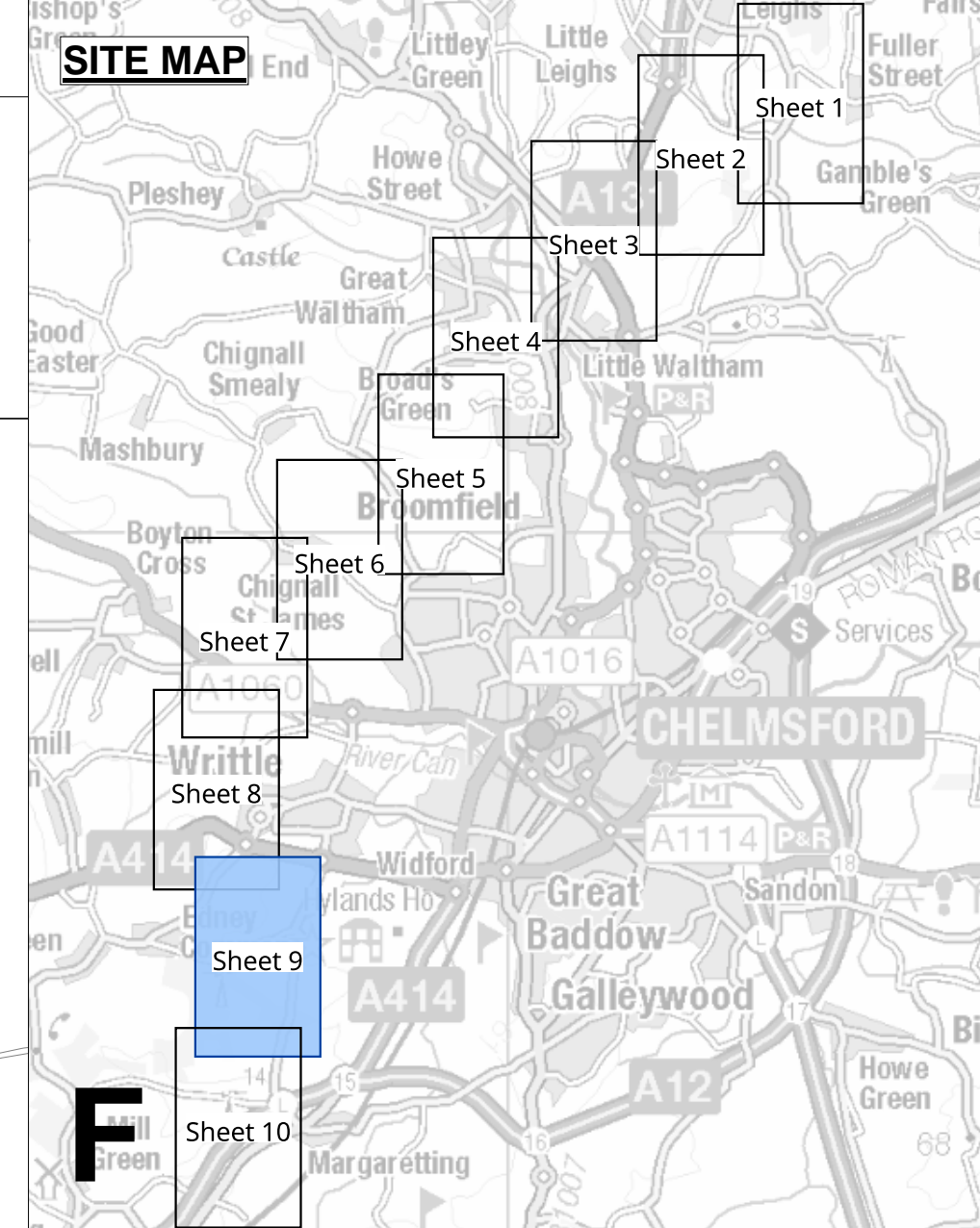
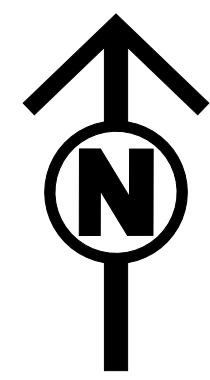
National Grid Drawing Reference: AENC-TQST-LAN-DWG-0002

Scale	Sheet Size	Sheet	Issue
1:2,500	A0	SHEET 7 of 10	C



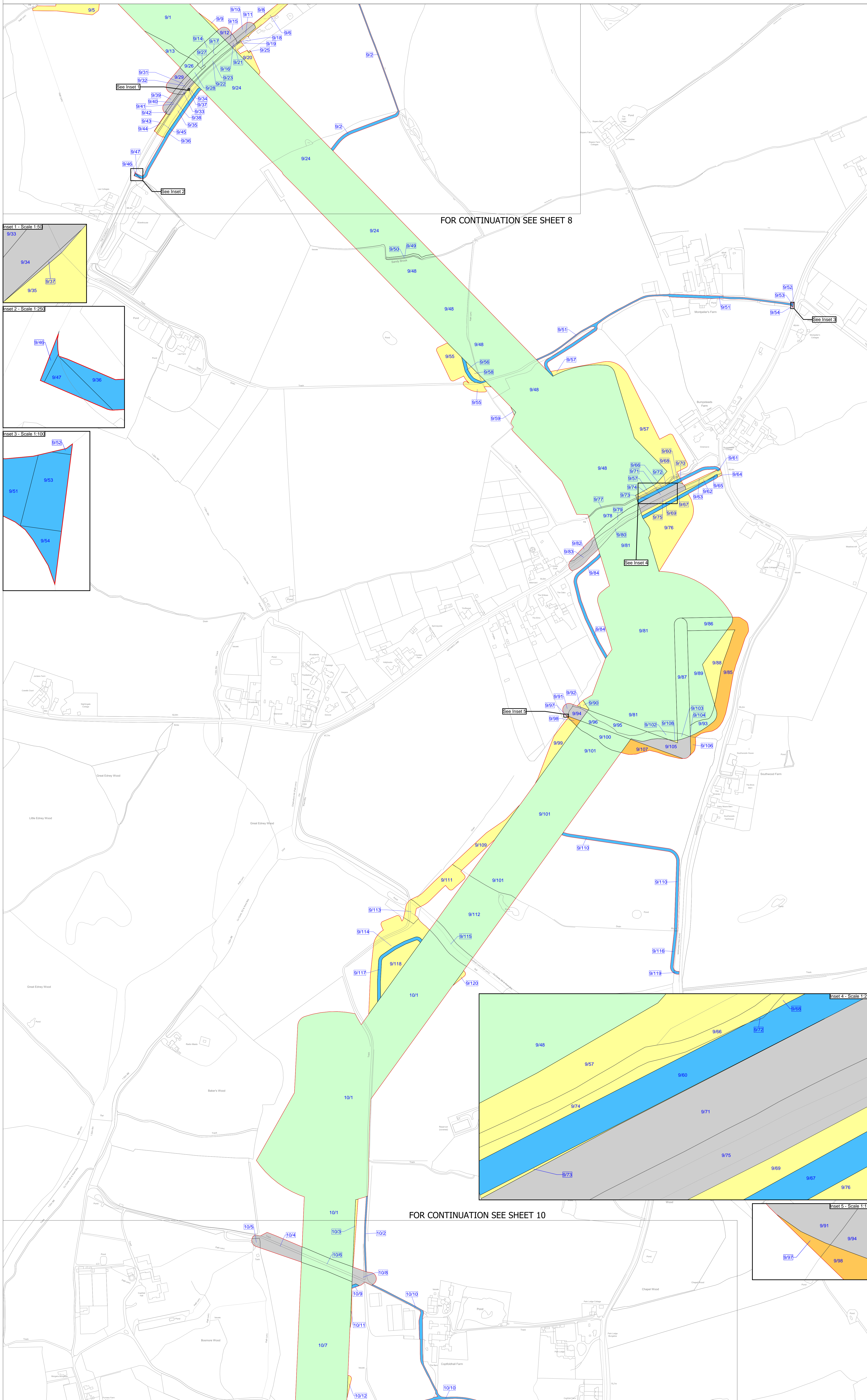
THE NATIONAL GRID (NORWICH TO TILBURY) ORDER  
 LAND PLANS  
 REGULATION 5(2)(i)-(iii)  
 SECTION F (SHEET 9 OF 10,  
 CHELMSFORD CITY COUNCIL)

Application Document 2.2



Legend

- Local authority boundary
- Section boundary & local authority boundary
- ..... Section boundary
- Sheet index outlines
- Order Limits
- Class 1 - Compulsory acquisition of land
- Class 2 - Compulsory acquisition of rights - Overhead line
- Class 3 - Compulsory acquisition of rights - Underground cable system
- Class 4 - Compulsory acquisition of rights - Overhead line and underground cable system
- Class 5 - Compulsory acquisition of rights - Access
- Class 6 - Compulsory acquisition of rights - Drainage
- Class 7 - Temporary use
- Class 8 - Land not subject to powers of acquisition nor temporary use



**Notes**  
 1. For additional detail on the plan suites, please refer to the Guide to Plans (document reference 2.0), located in the Volume 2 of the DCO application.  
 2. This drawing is scaled at paper size A0, therefore any prints taken at smaller sizes will affect accuracy of the measurement units and should not be scaled against.

Coordinate System: British National Grid  
 Sheet X Centroid Coordinate: 566519 Sheet Y Centroid Coordinate: 204110

BACKGROUND MAPPING INFORMATION HAS BEEN REPRODUCED FROM THE ORDINANCE SURVEY BY PERMISSION OF ORDINANCE SURVEY OF THE CONTROLLER OF HIS MAJESTY'S STATIONERY OFFICE. © CROWN COPYRIGHT AND DATABASE RIGHTS (2025) LICENCE OS100024241 AND AG000807946.

Issue	Date	Remarks	Drawn	Checked	Approved
C	MAY-2026	For deadline four	CLJ	RCA	KPA
B	OCT-2025	October 2025 Update	CBE	AMI	CLJ
A	AUG-2025	For DCO Submission	CBE	AMI	CLJ

**Title:**  
 THE NATIONAL GRID (NORWICH TO TILBURY) ORDER  
 LAND PLANS  
 REGULATION 5(2)(i)-(iii)  
 SECTION F (SHEET 9 OF 10  
 CHELMSFORD CITY COUNCIL)

**nationalgrid**

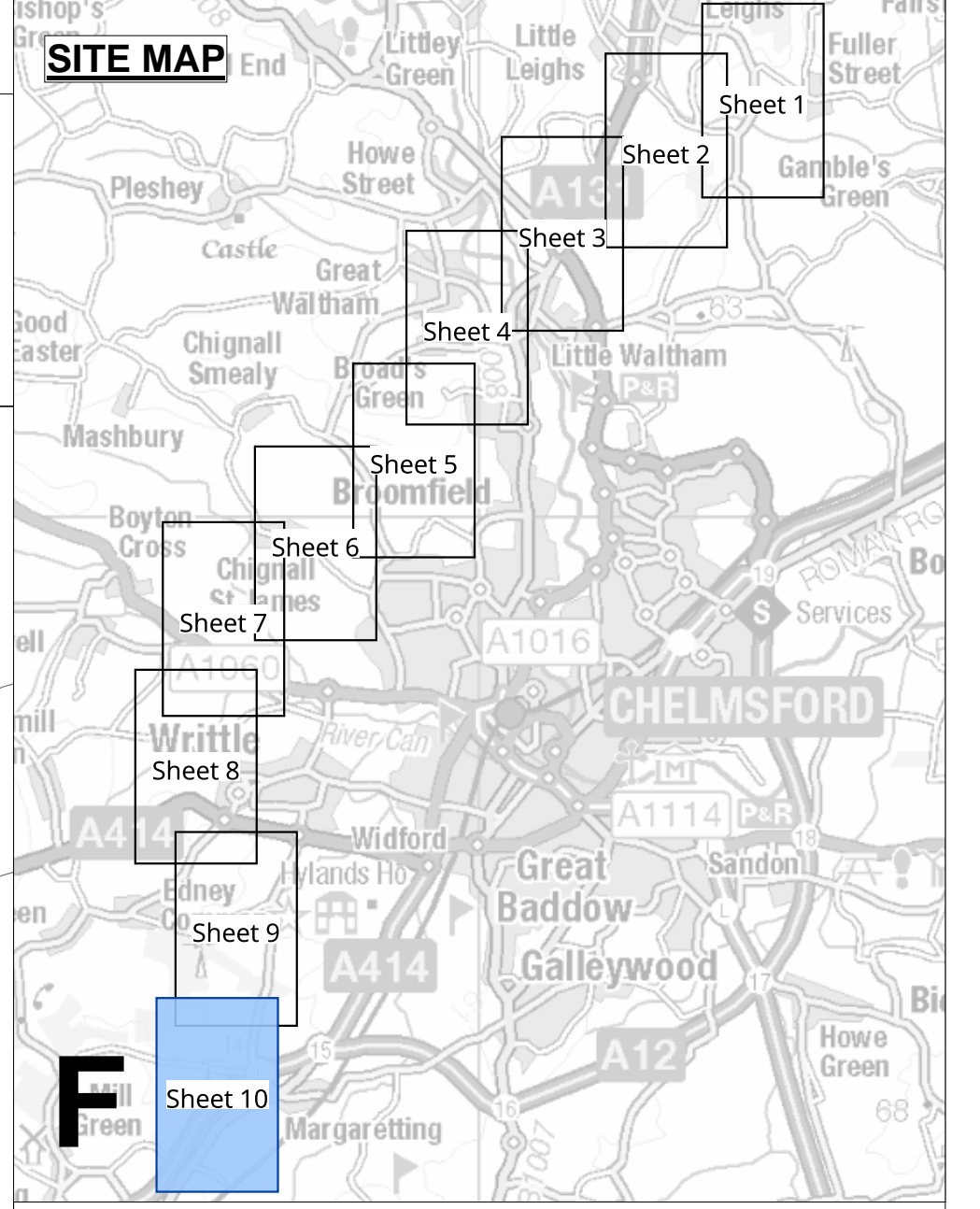
**PINS Application Number:** EN020027

**National Grid Drawing Reference:** AENC-TQST-LAN-DWG-0002

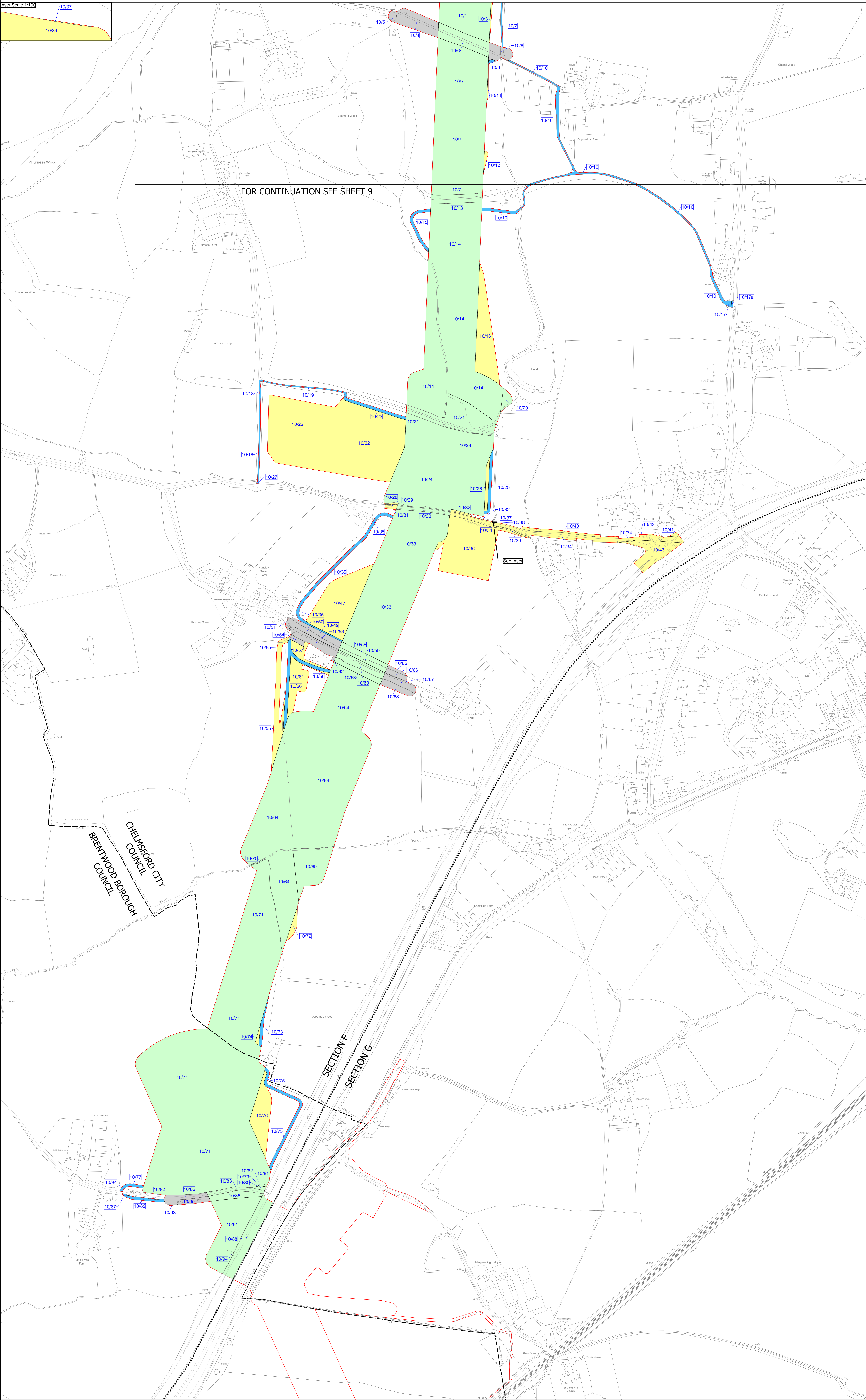
Scale	Sheet Size	Sheet	Issue
1:2,500	A0	SHEET 9 of 10	C

THE NATIONAL GRID (NORWICH TO TILBURY) ORDER  
 LAND PLANS  
 REGULATION 5(2)(i)-(iii)  
 SECTION F (SHEET 10 OF 10,  
 CHELMSFORD CITY COUNCIL AND BRENTWOOD BOROUGH COUNCIL)

Application Document 2.2



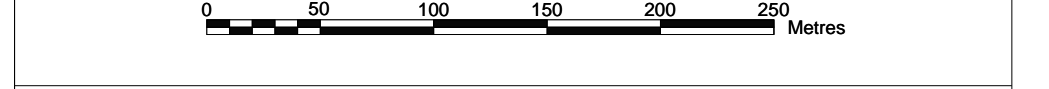
- Legend**
- Local authority boundary
  - Section boundary & local authority boundary
  - ..... Section boundary
  - Sheet index outlines
  - Order Limits
  - Class 1 - Compulsory acquisition of land
  - Class 2 - Compulsory acquisition of rights - Overhead line
  - Class 3 - Compulsory acquisition of rights - Underground cable system
  - Class 4 - Compulsory acquisition of rights - Overhead line and underground cable system
  - Class 5 - Compulsory acquisition of rights - Access
  - Class 6 - Compulsory acquisition of rights - Drainage
  - Class 7 - Temporary use
  - Class 8 - Land not subject to powers of acquisition nor temporary use



FOR CONTINUATION SEE SHEET 9

- Notes**
1. For additional detail on the plan suites, please refer to the Guide to Plans (document reference 2.0), located in the Volume 2 of the DCO application.
  2. This drawing is scaled at paper size A0, therefore any prints taken at smaller sizes will affect accuracy of the measurement units and should not be scaled against.

Coordinate System: British National Grid  
 Sheet X Centroid Coordinate : 566248 Sheet Y Centroid Coordinate : 201736



BACKGROUND MAPPING INFORMATION HAS BEEN REPRODUCED FROM THE ORDINANCE SURVEY BY PERMISSION OF ORDINANCE SURVEY OF THE CONTROLLER OF HIS MAJESTY'S STATIONERY OFFICE. © CROWN COPYRIGHT AND DATABASE RIGHTS(2025) LICENCE OS100024241 AND AG0000807946.

Issue	Date	Remarks	Drawn	Checked	Approved
C	MAY-2026	For deadline four	CLJ	RCA	KPA
B	OCT-2025	October 2025 Update	CBE	AMI	CLJ
A	AUG-2025	For DCO Submission	CBE	KGA	CLJ

Title:  
 THE NATIONAL GRID (NORWICH TO TILBURY) ORDER  
 LAND PLANS  
 REGULATION 5(2)(i)-(iii)  
 SECTION F (SHEET 10 OF 10  
 CHELMSFORD CITY COUNCIL AND  
 BRENTWOOD BOROUGH COUNCIL)

**nationalgrid**

PINS Application Number: EN020027

National Grid Drawing Reference: AENC-TQST-LAN-DWG-0002

Scale	Sheet Size	Sheet	Issue
1:2,500	A0	SHEET 10 of 10	C

National Grid plc  
National Grid House,  
Warwick Technology Park,  
Gallows Hill, Warwick.  
CV34 6DA United Kingdom

Registered in England and Wales  
No. 4031152  
[nationalgrid.com](http://nationalgrid.com)